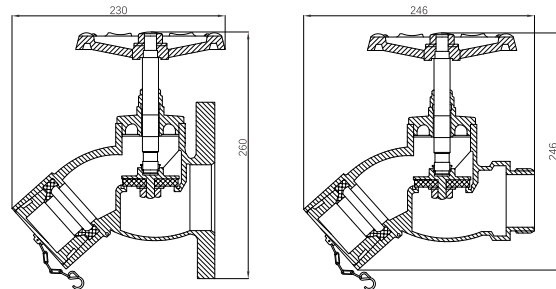


Bib-nosed type wet landing valve

Bib-nosed type wet landing valve from TPMC is designed with a bib-nose outlet for quick and secure hose coupling. This design enables fast, user-friendly connection and ensures dependable water flow for reliable fire protection in high-rise wet riser systems.



- Certificate: BSI / LPCB / FM Approved
- Standard: BS 5041-1, BS 5154 globe type
- Connection: Flanged to EN 1092-3, ANSI B16.5 Class 150, or screwed to ISO 7-1
- Temperature: 0°C to 38°C
- Test: Body 22.5 bar / seat 16.5 bar
- Surface: Red powder coating (RAL 3000)



DN 65 size

Main parts and material

Body / bonnet / disk	Copper alloy, LG2 or CZ122	Handwheel	Grey cast iron to BS 1452
Blank cap	Copper alloy to EN 1982, with chain	Strap	Artificial leather, with non-ferrous padlock

Available size (Source 1 with BSI/LPCB)

Size	Type	Inlet	Outlet	Working pressure (bar)	Ref. No.
DN 50	Bib-nosed	Flanged DN 50, PN 16	2.5" BS336	15	FE1301 (BSI/LPCB)
DN 65	Bib-nosed	Flanged DN 65, PN 16	2.5" BS336	15	FE1302 (BSI/LPCB)
DN 65	Bib-nosed	2.5" BSPT, M	2.5" BS336	15	FE1303 (BSI/LPCB)

Note: LPCB certified (Cert No. 1153Le) in TPMC models F27-50, F27-65, F28-65T.

Bib-nosed type wet landing valve

Available size (Source 2 with FM)

Size	Type	Inlet	Outlet	Working pressure (bar)	Ref. No.
DN 80	Bib-nosed	Flanged DN 80, PN 16	2.5" BS336 / BSP / NH	16	FE1321 (FM)
DN 80	Bib-nosed	Flanged 3", Class 150	2.5" BS336 / BSP / NH	16	FE1322 (FM)
DN 65	Bib-nosed	Flanged 2.5", Class 150	2.5" BS336 / BSP / NH	16	FE1323 (ISO)
DN 65	Bib-nosed	2.5" BSPT, M	2.5" BS336 / BSP / NH	16	FE1324 (FM)
DN 65	Bib-nosed	2.5" NPT, M	2.5" BS336 / BSP / NH	16	FE1325 (ISO)