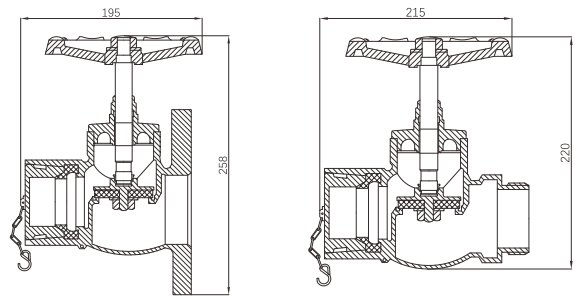


Horizontal type wet landing valve

Horizontal type wet landing valve from TPMC is designed with a horizontal outlet for straightforward wall mounting in riser systems. This design allows easy layflat hose connection and ensures steady water flow for effective fire protection at high-rise discharge points.



- Certificate: BSI / LPCB Approved
- Standard: BS 5041-1, BS 5154 globe type
- Connection: Flanged to EN 1092-3, or screwed to ISO 7-1
- Temperature: 0°C to 38°C
- Test: Body 22.5 bar / seat 16.5 bar
- Surface: Red powder coating (RAL 3000)



DN 65 size

Main parts and material

Body / bonnet / disk	Copper alloy, LG2 or CZ122	Handwheel	Grey cast iron to BS 1452
Blank cap	Copper alloy to EN 1982, with chain	Strap	Artificial leather, with non-ferrous padlock

Available size

Size	Type	Inlet	Outlet	Working pressure (bar)	Ref. No.
DN 50	Horizontal	Flanged DN 50, PN 16	2.5" BS336	15	FE1101
DN 65	Horizontal	Flanged DN 65, PN 16	2.5" BS336	15	FE1102
DN 65	Horizontal	2.5" BSPT, M	2.5" BS336	15	FE1103

Note: LPCB certified (Cert No. 1153Le) in TPMC models F23-50, F23-65, F24-65T.