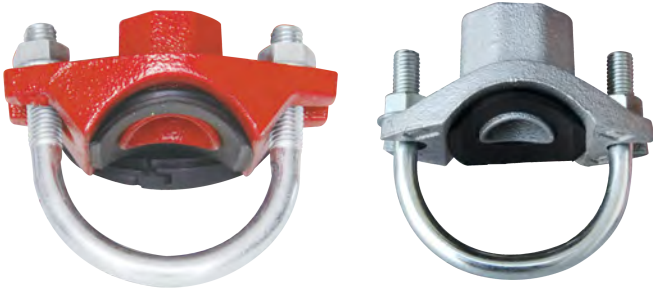
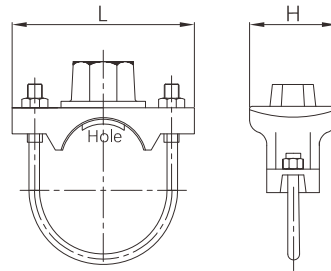


U-bolt mechanical tee with threaded branch



- Certificate: UL Listed / FM Approved
- Standard: ANSI / UL 213
- Housing: Ductile iron ASTM A536, 65-45-12
- Bolt & nut: Carbon steel, detail as G97
- Gasket: EPDM, nitrile, silicone rubber, etc.
- Branch: Female thread, NPT / BSPT
- Rated pressure: 300 ~ 500 psi
- Surface: Red painting / hot dip galvanized



Available size (Source 1)

Size			Hole mm	Dimension (mm)		Bolting (n x bolt size)		Ref. No.
Inch	DN	mm		L	H	ANSI	EN	
1" x 1/2"	25 x 15	33.7 x 21.3	24	76	43	3/8" x 25	M10 x 25	G7701 (UL/FM)
1" x 3/4"	25 x 20	33.7 x 26.9	24	84	43	3/8" x 25	M10 x 25	G7702 (UL/FM)
1" x 1"	25 x 25	33.7 x 33.7	24	92	57	3/8" x 28.5	M10 x 28.5	G7703 (ISO)
1-1/4" x 1/2"	32 x 15	42.4 x 21.3	30	90	56	3/8" x 28.5	M10 x 28.5	G7704 (UL/FM)
1-1/4" x 3/4"	32 x 20	42.4 x 26.9	30	90	56	3/8" x 28.5	M10 x 28.5	G7705 (UL/FM)
1-1/4" x 1"	32 x 25	42.4 x 33.7	30	90	56	3/8" x 28.5	M10 x 28.5	G7706 (UL/FM)
1-1/2" x 1/2"	40 x 15	48.3 x 21.3	30	93	59	3/8" x 28.5	M10 x 28.5	G7707 (UL/FM)
1-1/2" x 3/4"	40 x 20	48.3 x 26.9	30	93	59	3/8" x 28.5	M10 x 28.5	G7708 (UL/FM)
1-1/2" x 1"	40 x 25	48.3 x 33.7	30	93	59	3/8" x 28.5	M10 x 28.5	G7709 (FM)
1-1/2" x 1"	40 x 25	48.3 x 33.7	32	93	59	3/8" x 28.5	M10 x 28.5	G7710 (UL/FM)
2" x 1/2"	50 x 15	60.3 x 21.3	30	96	59	3/8" x 30	M10 x 30	G7711 (UL/FM)
2" x 3/4"	50 x 20	60.3 x 26.9	30	96	59	3/8" x 30	M10 x 30	G7712 (UL/FM)
2" x 1"	50 x 25	60.3 x 33.7	30	96	59	3/8" x 30	M10 x 30	G7713 (FM)
2" x 1"	50 x 25	60.3 x 33.7	32	96	59	3/8" x 30	M10 x 30	G7714 (UL/FM)
2-1/2" x 1/2"	65 x 15	73.0 x 21.3	30	110	59	3/8" x 30	M10 x 30	G7715 (UL/FM)

U-bolt mechanical tee with threaded branch

Available size (Source 1)

Size			Hole mm	Dimension (mm)		Bolting (n x bolt size)		Ref. No.
Inch	DN	mm		L	H	ANSI	EN	
2-1/2" x 3/4"	65 x 20	73.0 x 26.9	30	110	59	3/8" x 30	M10 x 30	G7716 (UL/FM)
2-1/2" x 1"	65 x 25	73.0 x 33.7	30	110	59	3/8" x 30	M10 x 30	G7717 (UL/FM)
2-1/2" x 1-1/4"	65 x 32	73.0 x 42.4	51	113.5	74.2	3/8" x 30	M10 x 30	G7718 (UL)
2-1/2" x 1/2"	65 x 15	76.1 x 21.3	30	110	59	3/8" x 30	M10 x 30	G7719 (UL/FM)
2-1/2" x 3/4"	65 x 20	76.1 x 26.9	30	110	59	3/8" x 30	M10 x 30	G7720 (UL/FM)
2-1/2" x 1"	65 x 25	76.1 x 33.7	30	110	59	3/8" x 30	M10 x 30	G7721 (UL/FM)

Available size (Source 2)

Size			Hole mm	Dimension (mm)		Bolting (n x bolt size)		Ref. No.
Inch	DN	mm		L	H	ANSI	EN	
1-1/4" x 1/2"	32 x 15	42.4 x 21.3	30	88.9	57.2	3/8" x 73	M10 x 73	G7731 (UL/FM)
1-1/4" x 3/4"	32 x 20	42.4 x 26.9	30	88.9	57.2	3/8" x 73	M10 x 73	G7732 (UL/FM)
1-1/4" x 1"	32 x 25	42.4 x 33.7	30	88.9	57.2	3/8" x 73	M10 x 73	G7733 (UL/FM)
1-1/2" x 1/2"	40 x 15	48.3 x 21.3	30	88.9	57.2	3/8" x 73	M10 x 73	G7734 (UL/FM)
1-1/2" x 3/4"	40 x 20	48.3 x 26.9	30	88.9	57.2	3/8" x 73	M10 x 73	G7735 (UL/FM)
1-1/2" x 1"	40 x 25	48.3 x 33.7	30	88.9	57.2	3/8" x 73	M10 x 73	G7736 (UL/FM)
2" x 1/2"	50 x 15	60.3 x 21.3	30	95.3	57.2	3/8" x 90	M10 x 90	G7737 (UL/FM)
2" x 3/4"	50 x 20	60.3 x 26.9	30	95.3	57.2	3/8" x 90	M10 x 90	G7738 (UL/FM)
2" x 1"	50 x 25	60.3 x 33.7	30	96.3	57.2	3/8" x 90	M10 x 90	G7739 (UL/FM)
2-1/2" x 1/2"	65 x 15	73.0 x 21.3	30	108	57.2	3/8" x 105	M10 x 105	G7740 (UL/FM)
2-1/2" x 3/4"	65 x 20	73.0 x 26.9	30	108	57.2	3/8" x 105	M10 x 105	G7741 (UL/FM)
2-1/2" x 1"	65 x 25	73.0 x 33.7	30	108	57.2	3/8" x 105	M10 x 105	G7742 (UL/FM)
2-1/2" x 1/2"	65 x 15	76.1 x 21.3	30	108	57.2	3/8" x 105	M10 x 105	G7743 (UL/FM)
2-1/2" x 3/4"	65 x 20	76.1 x 26.9	30	108	57.2	3/8" x 105	M10 x 105	G7744 (UL/FM)
2-1/2" x 1"	65 x 25	76.1 x 33.7	30	108	57.2	3/8" x 105	M10 x 105	G7745 (UL/FM)
3" x 1"	80 x 25	88.9 x 33.7	38	145	73	1/2" x 58	M12 x 58	G7746 (UL/FM)
4" x 1"	100 x 25	114.3 x 33.7	30	185	72	1/2" x 70	M12 x 70	G7747 (UL)
4" x 1-1/4"	100 x 32	114.3 x 42.4	51	185	85	1/2" x 70	M12 x 70	G7748 (UL)
4" x 1-1/2"	100 x 40	114.3 x 48.3	51	185	85	1/2" x 70	M12 x 70	G7749 (UL)
6" x 1"	150 x 25	168.3 x 33.7	38	254	75	5/8" x 102	M16 x 102	G7750 (UL)
6" x 1-1/4"	150 x 32	168.3 x 42.4	51	254	88	5/8" x 102	M16 x 102	G7751 (UL)
6" x 1-1/2"	150 x 40	168.3 x 48.3	57	254	88	5/8" x 102	M16 x 102	G7752 (UL)