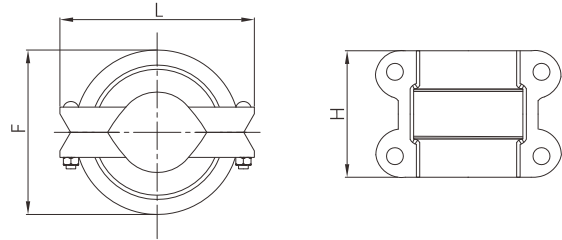


# Plain end HDPE coupling



- Certificate: ISO
- Standard: Refer to ANSI / UL 213
- Housing: Ductile iron ASTM A536, 65-45-12
- Bolt & nut: CS or SS (see detail G92 ~ G96)
- Gasket: EPDM, nitrile, etc. (see detail G91)
- Connection: Plain end HDPE pipe, PE4710 per ASTM D3035, PE100 per ISO 4427-2
- Surface: Red painting



## Available size for PE4710 HDPE pipe

Size		Pipe thickness	Dimension (mm)			Bolting (n x bolt size)	Working pressure (psi)	Ref. No.
IPS	Ave. OD (mm)		F	L	H			
2"	60.3	SDR 21 ~ SDR 7	83	120	117	4 - 1/2" x 60	335	G5901 (ISO)
3"	88.9	SDR 21 ~ SDR 7	114	165	116	4 - 1/2" x 75	335	G5902 (ISO)
4"	114.3	SDR 21 ~ SDR 7	144	201	146	4 - 1/2" x 75	335	G5903 (ISO)
6"	168.3	SDR 21 ~ SDR 7	200	250	149	4 - 5/8" x 85	335	G5904 (ISO)
8"	219.1	SDR 21 ~ SDR 7	258	309	152	4 - 5/8" x 85	335	G5905 (ISO)
10"	273.1	SDR 21 ~ SDR 7	311	386	164	4 - 3/4" x 120	335	G5906 (ISO)
12"	323.9	SDR 21 ~ SDR 7	368	444	180	4 - 3/4" x 120	335	G5907 (ISO)

## Available size for PE100 HDPE pipe

Size		Pipe thickness	Dimension (mm)			Bolting (n x bolt size)	Working pressure (bar)	Ref. No.
DN	OD (mm)		F	L	H			
63	63.0 ~ 63.4	SDR 17 ~ SDR 7.4	86	116	105	4 - M10 x 60	PN 25	G5921 (ISO)
110	110.0 ~ 110.7	SDR 17 ~ SDR 7.4	138	180	110	4 - M12 x 75	PN 25	G5922 (ISO)
160	160.0 ~ 161.0	SDR 17 ~ SDR 7.4	189	236	118	4 - M12 x 75	PN 25	G5923 (ISO)
200	200.0 ~ 201.2	SDR 17 ~ SDR 7.4	238	309	127	4 - M16 x 85	PN 25	G5924 (ISO)
250	250.0 ~ 251.5	SDR 17 ~ SDR 7.4	289	348	135	4 - M16 x 100	PN 25	G5925 (ISO)
315	315.0 ~ 316.9	SDR 17 ~ SDR 7.4	359	438	165	4 - M20 x 120	PN 25	G5926 (ISO)