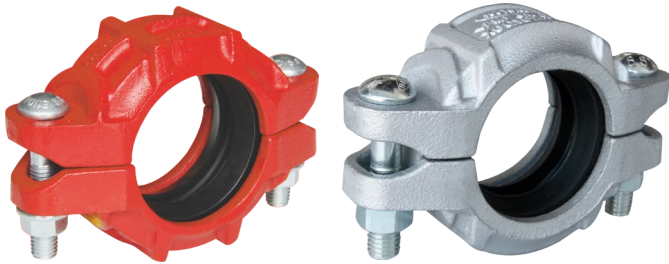
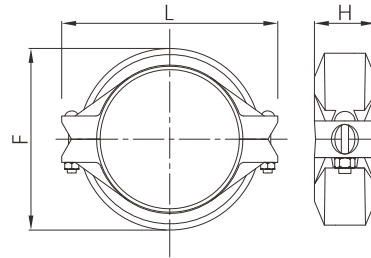


# Heavy-duty flexible grooved coupling



- Certificate: UL Listed / FM Approved
- Standard: ANSI / UL 213
- Housing: Ductile iron ASTM A536, 65-45-12
- Bolt & nut: Carbon steel, detail as G92 ~ G96
- Gasket: EPDM, nitrile, silicone rubber, etc.
- Rated pressure: 500 ~ 750 psi
- Surface: Red painting / hot dip galvanized



## Available size

Size			Dimension (mm)			Bolting (n x bolt size)		Ref. No.
Inch	DN	mm	F	L	H	ANSI	EN	
2"	50	60.3	90	134	45	2 - 1/2" x 75	2 - M12 x 76	G5404
2-1/2"	65	73.0	100	150	45	2 - 1/2" x 75	2 - M12 x 76	G5405
2-1/2"	65	76.1	102	154	45	2 - 1/2" x 75	2 - M12 x 76	G5406
3"	80	88.9	121	172	45	2 - 1/2" x 75	2 - M12 x 76	G5407
4"	100	114.3	151	214	50	2 - 5/8" x 85	2 - M16 x 85	G5408
5"	125	139.7	178	247	52	2 - 3/4" x 115	2 - M20 x 115	G5409
5"	125	141.3	180	248	51	2 - 3/4" x 115	2 - M20 x 115	G5410
6"	150	165.1	205	278	51	2 - 3/4" x 115	2 - M20 x 115	G5411
6"	150	168.3	208	284	51	2 - 3/4" x 115	2 - M20 x 115	G5412
8"	200	219.1	268	354	61	2 - 7/8" x 140	2 - M22 x 140	G5413
10"	250	273.0	317	418	67	2 - 1" x 165	2 - M24 x 165	G5414
12"	300	323.9	375	464	68	2 - 1" x 165	2 - M24 x 165	G5415