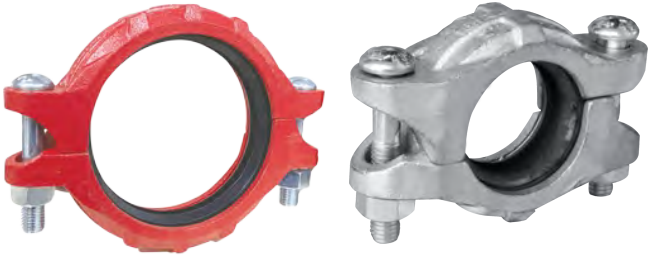
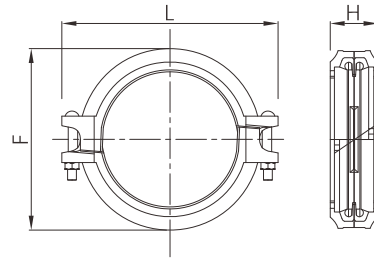


Heavy-duty rigid grooved coupling



- Certificate: UL Listed
- Standard: ANSI / UL 213
- Housing: Ductile iron ASTM A536, 65-45-12
- Bolt & nut: Carbon steel, detail as G92 ~ G96
- Gasket: EPDM, nitrile, silicone rubber, etc.
- Rated pressure: 750 psi
- Surface: Red painting / hot dip galvanized



Available size

Size			Dimension (mm)			Bolting (n x bolt size)		Ref. No.
Inch	DN	mm	F	L	H	ANSI	EN	
2"	50	60.3	88	136	45	2 - 1/2" x 75	2 - M12 x 75	G5304
2-1/2"	65	73.0	101	150	45	2 - 1/2" x 75	2 - M12 x 75	G5305
2-1/2"	65	76.1	104	155	45	2 - 1/2" x 75	2 - M12 x 75	G5306
3"	80	88.9	121	174	46	2 - 1/2" x 75	2 - M12 x 75	G5307
4"	100	114.3	150	217	50	2 - 5/8" x 80	2 - M16 x 80	G5308
5"	125	139.7	179	249	52	2 - 3/4" x 115	2 - M20 x 115	G5309
5"	125	141.3	180	250	51	2 - 3/4" x 115	2 - M20 x 115	G5310
6"	150	165.1	208	281	51	2 - 3/4" x 115	2 - M20 x 115	G5311
6"	150	168.3	211	285	52	2 - 3/4" x 115	2 - M20 x 115	G5312
8"	200	219.1	269	358	61	2 - 7/8" x 125	2 - M22 x 125	G5313
10"	250	273.0	326	420	63	2 - 7/8" x 125	2 - M22 x 125	G5314
12"	300	323.9	385	481	66	2 - 7/8" x 140	2 - M22 x 140	G5315