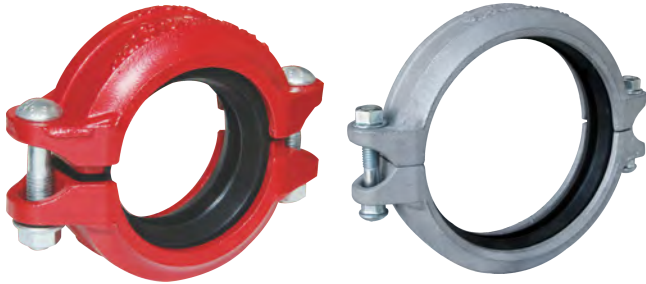
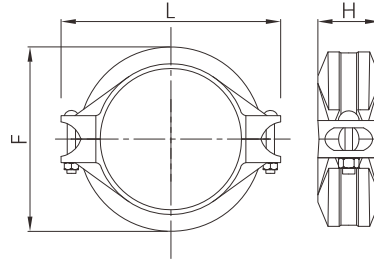


Rigid grooved coupling



- Certificate: UL Listed / FM Approved
- Standard: ANSI / UL 213
- Housing: Ductile iron ASTM A536, 65-45-12
Stainless steel ASTM A312 304 / 316
- Bolt & nut: Carbon steel, detail as G92 ~ G96
- Gasket: EPDM, nitrile, silicone rubber, etc.
- Rated pressure: 300 ~ 500 psi
- Surface: Red painting / hot dip galvanized
SS 304 / SS 316



Available size

Size		Dimension (mm)				Bolting (n x bolt size)		Ref. No.
Inch	DN	mm	F	L	H	ANSI	EN	
1"	25	33.7	59	100	44	2 - 3/8" x 55	2 - M10 x 57	G5101 (UL/FM)
1-1/4"	32	42.4	66	110	45	2 - 3/8" x 55	2 - M10 x 57	G5102 (UL/FM)
1-1/2"	40	48.3	72	115	45	2 - 3/8" x 55	2 - M10 x 57	G5103 (UL/FM)
2"	50	60.3	85	131	45	2 - 3/8" x 55	2 - M10 x 57	G5104 (UL/FM)
2-1/2"	65	73.0	98	145	45	2 - 3/8" x 55	2 - M10 x 57	G5105 (UL/FM)
2-1/2"	65	76.1	101	147	45	2 - 3/8" x 55	2 - M10 x 57	G5106 (UL/FM)
3"	80	88.9	115	170	46	2 - 1/2" x 70	2 - M12 x 70	G5107 (UL/FM)
4"	100	114.3	146	200	52	2 - 1/2" x 70	2 - M12 x 70	G5108 (UL/FM)
5"	125	139.7	170	238	52	2 - 5/8" x 85	2 - M16 x 85	G5109 (UL/FM)
5"	125	141.3	172	237	52	2 - 5/8" x 85	2 - M16 x 85	G5110 (UL/FM)
6"	150	165.1	198	266	52	2 - 5/8" x 85	2 - M16 x 85	G5111 (UL/FM)
6"	150	168.3	202	270	52	2 - 5/8" x 85	2 - M16 x 85	G5112 (UL/FM)
8"	200	219.1	260	346	62	2 - 3/4" x 115	2 - M20 x 115	G5113 (UL/FM)
10"	250	273.0	327	420	63	2 - 7/8" x 125	2 - M22 x 125	G5114 (UL/FM)
12"	300	323.9	378	466	63	2 - 7/8" x 140	2 - M22 x 140	G5115 (UL/FM)

Rigid grooved coupling

Available size

Size			Dimension (mm)			Bolting (n x bolt size)		Ref. No.
Inch	DN	mm	F	L	H	ANSI	EN	
14"	350	355.6	415	510	72	3 - 7/8" x 140	3 - M22 x 140	G5116 (UL/FM)
16"	400	406.4	468	575	72	3 - 7/8" x 140	3 - M22 x 140	G5117 (UL/FM)
18"	450	457.2	508	608	78	3 - 7/8" x 140	3 - M22 x 140	G5118 (UL)
20"	500	508.0	563	660	78	4 - 7/8" x 140	4 - M22 x 140	G5119 (UL)
24"	600	609.6	668	772	78	4 - 1" x 140	4 - M24 x 140	G5120 (UL)