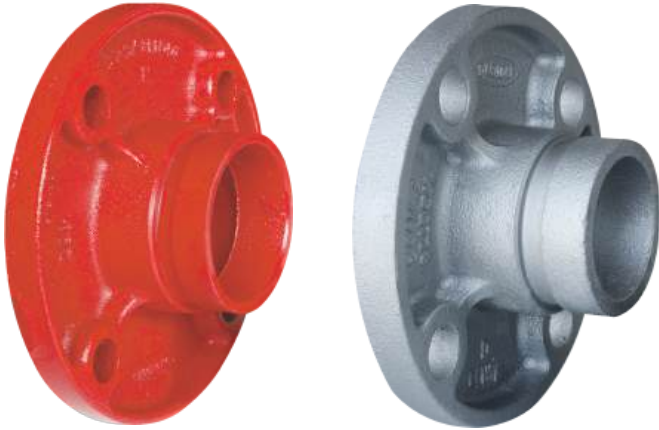
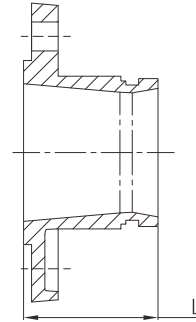


ANSI grooved flange one-piece (Flanged adapter)



- Certificate: UL Listed / FM Approved
- Standard: ANSI / UL 213C
- Material: Ductile iron ASTM A536, 65-45-12
Stainless steel ASTM A312 304 / 316
- Flanged end: ANSI B16.1 Class 125,
B16.42 Class 150, FF or RF
- Rated pressure: 300 psi
- Surface: Red painting / hot dip galvanized
SS 304 / SS 316



Available size

Size			L	Bolting for mating flange		Flanged end connection	Ref. No.
Inch	DN	mm		mm	PCD (mm)		
2"	50	60.3	65	120.7	4 x 5/8"	Class 125 / 150	G4304 (UL/FM)
2-1/2"	65	73.0	65	139.7	4 x 5/8"	Class 125 / 150	G4305 (UL/FM)
3"	80	88.9	65	152.4	4 x 5/8"	Class 125 / 150	G4307 (UL/FM)
4"	100	114.3	70	190.5	8 x 5/8"	Class 125 / 150	G4308 (UL/FM)
6"	150	168.3	70	241.3	8 x 3/4"	Class 125 / 150	G4312 (UL/FM)
8"	200	219.1	80	298.5	8 x 3/4"	Class 125 / 150	G4313 (UL/FM)
10"	250	273.0	85	362.0	12 x 7/8"	Class 125 / 150	G4314 (UL/FM)
12"	300	323.8	90	431.8	12 x 7/8"	Class 125 / 150	G4315 (UL/FM)
14"	350	355.6	127	476.3	12 x 1"	Class 125 / 150	G4316 (UL)
16"	400	406.4	127	539.8	16 x 1"	Class 125 / 150	G4317 (UL)
24"	600	610.0	152	749.3	20 x 1-1/4"	Class 125 / 150	G4320 (UL)