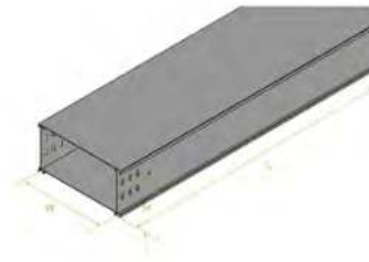


Channel cable tray straight section

Channel cable tray is a continuous, rigid structural system used to support and route electrical cables. The straight section features a singular and U-shaped design with two side rails and a bottom that can be either solid (fully enclosed for maximum protection) or ventilated (with perforations for airflow and cable exit points), providing a balance of cable support and protection.



- Certificate: UL Listed
- Standard: NEMA VE 1, NFPA 70
- Material: Carbon steel / stainless steel
- Thickness: Standard 1.0 mm, available 1.2 ~ 2.0 mm
- Bottom: Solid-bottom / ventilated-bottom
- Load and span: As per standard
- Surface: Hot-dip galvanized, pre-galvanized / mill finish, polished



Available size

Size	Material	Bottom	Width	Height	Length	Ref. No.
			W (mm)	H (mm)	L (mm)	
50 x 50	CS / SS	Solid / ventilated	50	50	3000	C8101 (UL)
75 x 50	CS / SS	Solid / ventilated	75	50	3000	C8102 (ISO)
75 x 75	CS / SS	Solid / ventilated	75	75	3000	C8103 (ISO)
100 x 50	CS / SS	Solid / ventilated	100	50	3000	C8104 (ISO)
100 x 75	CS / SS	Solid / ventilated	100	75	3000	C8105 (ISO)
100 x 100	CS / SS	Solid / ventilated	100	100	3000	C8106 (UL)
150 x 50	CS / SS	Solid / ventilated	150	50	3000	C8107 (ISO)
150 x 75	CS / SS	Solid / ventilated	150	75	3000	C8108 (ISO)
150 x 100	CS / SS	Solid / ventilated	150	100	3000	C8109 (ISO)
150 x 150	CS / SS	Solid / ventilated	150	150	3000	C8110 (UL)
200 x 50	CS / SS	Solid / ventilated	200	50	3000	C8111 (ISO)
200 x 75	CS / SS	Solid / ventilated	200	75	3000	C8112 (ISO)

Channel cable tray straight section

Available size

Size	Material	Bottom	Width	Height	Length	Ref. No.
			W (mm)	H (mm)	L (mm)	
200 x 100	CS / SS	Solid / ventilated	200	100	3000	C8113 (UL)
200 x 150	CS / SS	Solid / ventilated	200	150	3000	C8114 (ISO)
200 x 200	CS / SS	Solid / ventilated	200	200	3000	C8115 (ISO)
300 x 50	CS / SS	Solid / ventilated	300	50	3000	C8116 (ISO)
300 x 75	CS / SS	Solid / ventilated	300	75	3000	C8117 (ISO)
300 x 100	CS / SS	Solid / ventilated	300	100	3000	C8118 (UL)
300 x 150	CS / SS	Solid / ventilated	300	150	3000	C8119 (ISO)
300 x 200	CS / SS	Solid / ventilated	300	200	3000	C8120 (ISO)
400 x 50	CS / SS	Solid / ventilated	400	50	3000	C8121 (ISO)
400 x 75	CS / SS	Solid / ventilated	400	75	3000	C8122 (ISO)
400 x 100	CS / SS	Solid / ventilated	400	100	3000	C8123 (UL)
400 x 150	CS / SS	Solid / ventilated	400	150	3000	C8124 (ISO)
400 x 200	CS / SS	Solid / ventilated	400	200	3000	C8125 (ISO)
500 x 50	CS / SS	Solid / ventilated	500	50	3000	C8126 (ISO)
500 x 75	CS / SS	Solid / ventilated	500	75	3000	C8127 (ISO)
500 x 100	CS / SS	Solid / ventilated	500	100	3000	C8128 (ISO)
500 x 150	CS / SS	Solid / ventilated	500	150	3000	C8129 (ISO)
500 x 200	CS / SS	Solid / ventilated	500	200	3000	C8130 (ISO)
600 x 50	CS / SS	Solid / ventilated	600	50	3000	C8131 (ISO)
600 x 75	CS / SS	Solid / ventilated	600	75	3000	C8132 (ISO)
600 x 100	CS / SS	Solid / ventilated	600	100	3000	C8133 (UL)
600 x 150	CS / SS	Solid / ventilated	600	150	3000	C8134 (ISO)
600 x 200	CS / SS	Solid / ventilated	600	200	3000	C8135 (ISO)

Note: For UL listed item, the material is SS304.