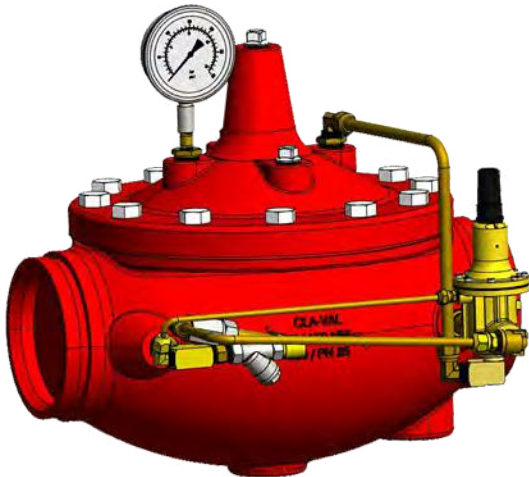
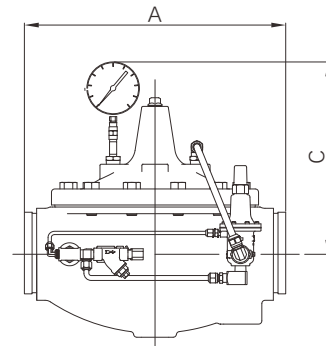


## Grooved globe type pressure relief valve

Pressure relief valve (Fire pump relief valve) is used in the discharge of fire pump to automatically relieve excessive pressure, so to maintain constant pressure. It allows the fire pump to be stopped without causing surging.



- Certificate: UL Listed / FM Approved
- Standard: UL 1478, NFPA 20
- Connection: Grooved as AWWA C606, ISO 6182
- Adjustment: 20 ~ 200 / 100 ~ 300 psi, etc.
- Temperature: Max 82°C, water
- W. pressure: 400 / 300 psi
- Surface: FBE coating as AWWA C550



### Main parts and material

<b>Body</b>	Ductile iron as ASTM A536, 65-45-12 / Bronze as B148 C95400	<b>Cover</b>	Ductile iron as ASTM A536, 65-45-12
<b>Main valve trim</b>	SS seat, SS stem	<b>Pilot control</b>	Cast bronze with SS trim

### Available size (Source 1 with UL/FM)

Size		Relief pressure range (psi)	A	Connection	Working pressure (psi)	Ref. No.
Inch	DN		mm			
1-1/2"	40	20 ~ 200 / 100 ~ 300	216	GxG	400	U1201 (ULC)
2"	50	20 ~ 200 / 100 ~ 300	228	GxG	400	U1202 (ULC)
2-1/2"	65	20 ~ 200 / 100 ~ 300	279	GxG	400	U1203 (ULC)
3"	80	20 ~ 200 / 100 ~ 300	318	GxG	400	U1204 (UL/FM)
4"	100	20 ~ 200 / 100 ~ 300	381	GxG	400	U1205 (UL/FM)
6"	150	20 ~ 200 / 100 ~ 300	508	GxG	400	U1207 (UL/FM)
8"	200	20 ~ 200 / 100 ~ 300	645	GxG	400	U1208 (UL/FM)

**Note:**

1. For size 3", 4", and 6", the working pressure is 300 psi by UL listed, and 400 psi by FM approved.
2. KOL Anti-Cavitation Trim Seat is available, except size 3", 4", 6".
3. As factory preset, the relief pressure is set at 60 psi for 20 ~ 200 range, 100 psi for 100 ~ 300 range.

# Grooved globe type pressure relief valve

## Available size (Source 2 with UL/FM)

Size		Relief pressure range (psi)	A	Connection	Working pressure (psi)	Ref. No.
Inch	DN		mm			
1-1/2"	40	65 ~ 300	200	GxG, GxF	300	U1221 (UL/FM)
2"	50	65 ~ 300	230	GxG, GxF	300	U1222 (UL/FM)
2-1/2"	65	65 ~ 300	290	GxG, GxF	300	U1223 (UL/FM)
3"	80	65 ~ 300	310	GxG, GxF	300	U1224 (UL/FM)
4"	100	65 ~ 300	350	GxG, GxF	300	U1225 (UL/FM)
5"	125	65 ~ 300	400	GxG, GxF	300	U1226 (UL/FM)
6"	150	65 ~ 300	480	GxG, GxF	300	U1227 (UL/FM)
8"	200	65 ~ 300	600	GxG, GxF	300	U1228 (UL/FM)
10"	250	65 ~ 300	730	GxG, GxF	300	U1229 (FM)
12"	300	65 ~ 300	850	GxG, GxF	300	U1230 (FM)

**Note:** As factory preset, the relief pressure is set at 130 psi for 65 ~ 300 range.