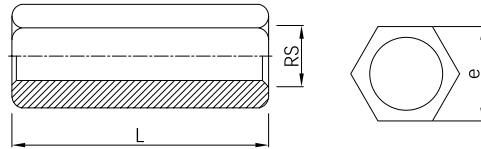


Straight rod coupling

Straight rod coupling is designed to join hanger rod of equal diameter, or to connect expansion anchor directly to hanger rod. It delivers precise alignment and reliable load transfer while effectively resisting upward thrust, vibration, and thermal movement. By simplifying installation and ensuring long-term pipe stability, it is a trusted component for fire sprinkler and mechanical piping systems.



- Certificate: ISO
- Standard: NFPA 13, UL 203, GB/T 17116.3
- Material: CS per ASTM A108 / ISO 898-1, SS per 304 / 316
- Thread: Imperial, UNC, Class 2A per ANSI B1.1
Metric, coarse thread, 6g per ISO 965-1
- Surface: CS, mill finish / zinc electroplated / hot-dip galvanized
SS, mill finish / passivated



Available size (Imperial)

Rode size (RS)	Length (L, inch)	Hex width (e, inch)	Max rec. load (lbs)	Ref. No.
1/4"	7/8"	3/8"	240	P7801 (ISO)
3/8"	1-3/4"	5/8"	730	P7802 (ISO)
1/2"	1-3/4"	11/16"	1350	P7803 (ISO)
5/8"	2-1/8"	13/16"	2160	P7804 (ISO)
3/4"	2-1/4"	1"	3230	P7805 (ISO)
7/8"	2-1/2"	1-1/4"	4480	P7806 (ISO)
1"	2-3/4"	1-3/8"	5900	P7807 (ISO)

Note: The load is based on carbon steel material at temperature range -29°C to 343°C (-20°F to 650°F).

Available size (Metric)

Rode size (RS)	Length (L, mm)	Hex width (e, mm)	Max rec. load (kN)	Ref. No.
M6	20	10	0.9	P7821 (ISO)
M8	25	13	1.8	P7822 (ISO)
M10	32	16	2.8	P7823 (ISO)
M12	38	17	4.0	P7824 (ISO)
M16	50	21	7.0	P7825 (ISO)
M20	63	25	11.5	P7826 (ISO)
M24	80	35	16.6	P7827 (ISO)

Note: The load is based on carbon steel material at temperature range -29°C to 343°C (-20°F to 650°F).