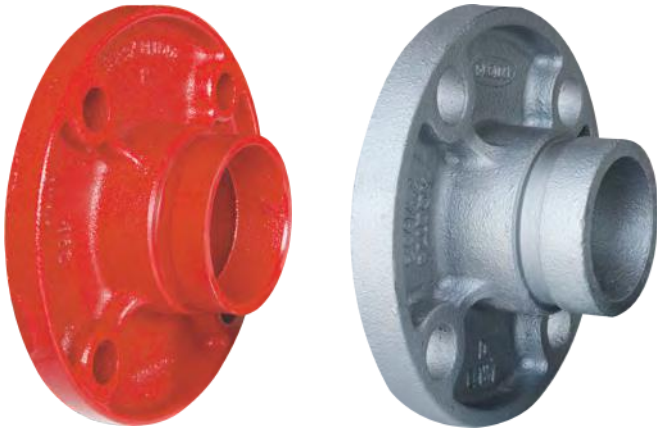
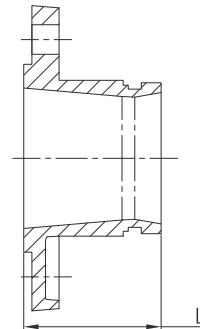


EN grooved flange one-piece (Flanged adapter)



- Certificate: UL Listed / FM Approved
- Standard: ANSI / UL 213C
- Material: Ductile iron ASTM A536, 65-45-12
- Flanged end: EN 1092-2, PN10 / PN 16 / PN 25, RF
- Rated pressure: 300 ~ 500 psi
- Surface: Red painting / hot dip galvanized



Available size of PN16

Size			L	Bolting for mating flange		Flanged end connection	Ref. No.
Inch	DN	mm		mm	PCD (mm)		
1"	25	33.7	61	85	4 x M12	PN 16	G4401-16 (UL/FM)
1-1/4"	32	42.4	61	100	4 x M16	PN 16	G4402-16 (UL/FM)
1-1/2"	40	48.3	61	110	4 x M16	PN 16	G4403-16 (UL/FM)
2"	50	60.3	61	125	4 x M16	PN 16	G4404-16 (UL/FM)
2-1/2"	65	73.0	61	145	4 x M16	PN 16	G4405-16 (UL/FM)
2-1/2"	65	76.1	61	145	4 x M16	PN 16	G4406-16 (UL/FM)
3"	80	88.9	65	160	8 x M16	PN 16	G4407-16 (UL/FM)
4"	100	114.3	70	180	8 x M16	PN 16	G4408-16 (UL/FM)
5"	125	139.7	70	210	8 x M16	PN 16	G4409-16 (UL/FM)
6"	150	165.1	70	240	8 x M20	PN 16	G4411-16 (UL/FM)
6"	150	168.3	70	240	8 x M20	PN 16	G4412-16 (UL/FM)
8"	200	219.1	80	295	12 x M20	PN 16	G4413-16 (UL/FM)
10"	250	273.0	85	355	12 x M24	PN 16	G4414-16 (UL/FM)
12"	300	323.9	90	410	12 x M24	PN 16	G4415-16 (UL/FM)

EN grooved flange one-piece (Flanged adapter)

Available size of PN10

Size			L mm	Bolting for mating flange		Flanged end connection	Ref. No.
Inch	DN	mm		PCD (mm)	Bolt		
8"	200	219.1	80	295	8 x M20	PN 10	G4413-10 (UL/FM)
10"	250	273.0	85	350	12 x M20	PN 10	G4414-10 (UL/FM)
12"	300	323.9	90	400	12 x M20	PN 10	G4415-10 (FM)

Available size of PN25

Size			L mm	Bolting for mating flange		Flanged end connection	Ref. No.
Inch	DN	mm		PCD (mm)	Bolt		
2-1/2"	65	76.1	65	145	8 x M16	PN 25	G4406-25 (ISO)
3"	80	88.9	65	160	8 x M16	PN 25	G4407-25 (ISO)
4"	100	114.3	70	190	8 x M20	PN 25	G4408-25 (UL/FM)
6"	150	165.1	70	250	8 x M24	PN 25	G4411-25 (UL/FM)
8"	200	219.1	80	310	12 x M24	PN 25	G4413-25 (UL/FM)
10"	250	273.0	85	370	12 x M27	PN 25	G4414-25 (ISO)
12"	300	323.9	88	430	16 x M27	PN 25	G4415-25 (ISO)
14"	350	355.6	100	490	16 x M30	PN 25	G4416-25 (UL)
16"	400	406.4	110	550	16 x M33	PN 25	G4417-25 (UL)