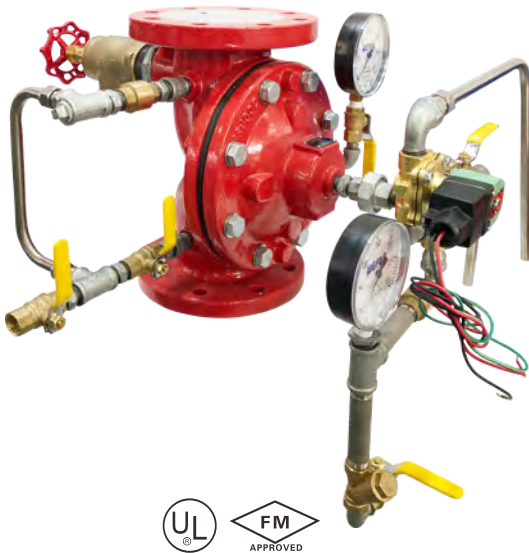
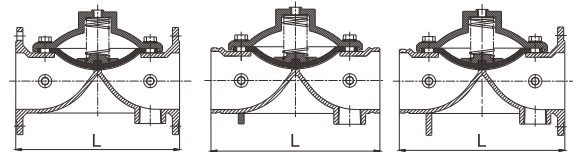


# Deluge valve

Deluge valve is mainly used in high flow deluge system. It is a diaphragm valve to automatically control the system water flow, and it actuates upon the wet pilot line, dry pilot line, electrical signal, and emergency manual release.



- Certificate: UL Listed / FM Approved
- Standard: UL 260
- Connection: Flanged ANSI B16.1 Class 125, EN 1092 PN 16, grooved, etc.
- Feature: Electrical actuation (Standard), vertical or horizontal installation
- Temperature: 0°C to 87°C
- W. pressure: 200 / 285 / 300 psi
- Surface: FBE coating as AWWA C550



## Main parts and material

<b>Body / cover</b>	Ductile iron as ASTM A536, 65-45-12	<b>Diaphragm</b>	BNR rubber as ASTM D2000
<b>Standard Accessories</b>	Complete pipelines for electrical actuation, solenoid valve, etc.	<b>Pre-assembly components</b>	Water motor gong, alarm pressure switch, pressure gauge

## Available size (Source 1 with UL)

Size		L	Actuation type	Connection	Working pressure (psi)	Ref. No.
Inch	DN	mm				
2"	50	233	Electrical / wet / dry	FxF, GxG, FxG	300	V6701 (UL)
2-1/2"	65	290	Electrical / wet / dry	FxF, GxG, FxG	300	V6702 (UL)
3"	80	310	Electrical / wet / dry	FxF, GxG, FxG	300	V6703 (UL)
4"	100	356	Electrical / wet / dry	FxF, GxG, FxG	300	V6704 (UL)
6"	150	436	Electrical / wet / dry	FxF, GxG, FxG	300	V6705 (UL)
8"	200	530	Electrical / wet / dry	FxF, GxG, FxG	300	V6706 (UL)
10"	250	636	Electrical / wet / dry	FxF, GxG, FxG	300	V6707 (UL)
12"	300	835	Electrical / wet / dry	FxF, GxG, FxG	300	V6708 (UL)

**Note:**

1. For wet pilot line trim, it includes different trim pipeline.
2. For dry pilot line trim, it includes different trim pipeline, air compressor, pneumatic actuator.
3. The flanged end connection is available with ANSI B16.5 Class 150, ANSI B16.42 Class 150, BS 4504 PN 16, or DIN 2532 PN 16.

# Deluge valve

## Available size (Source 2 with UL/FM)

Size		L	Actuation type	Connection	Working pressure (psi)	Ref. No.
Inch	DN	mm				
1 1/2"	40	259	Electrical / wet / dry	FxF, GxG	300	V6711 (UL/FM)
2"	50	259	Electrical / wet / dry	FxF, GxG	300	V6712 (UL/FM)
3"	80	351	Electrical / wet / dry	FxF, GxG	300	V6713 (UL/FM)
4"	100	427	Electrical / wet / dry	FxF, GxG	300	V6714 (UL/FM)
6"	150	569	Electrical / wet / dry	FxF, GxG	300	V6715 (UL/FM)
8"	200	699	Electrical / wet / dry	FxF, GxG	300	V6716 (UL/FM)

**Note:**

1. For wet pilot line trim, it includes different trim pipeline.
2. For dry pilot line trim, it includes different trim pipeline, air compressor, pneumatic actuator.
3. The flanged end connection is available with ASME B16.1 Class 125 or BS 4504 PN 16, or DIN 2532 PN 16.

## Available size (Source 3 with UL with more materials)

Size		L	Configuration type	Actuation type	Connection	Working pressure (psi)	Ref. No.
Inch	DN	mm					
3"	80	305	Globe / angle	Electrical / wet / dry	FxF, GxG	250 / 285 / 300	V6731 (UL)
4"	100	381	Globe / angle	Electrical / wet / dry	FxF, GxG	250 / 285 / 300	V6732 (UL)
6"	150	508	Globe / angle	Electrical / wet / dry	FxF, GxG	250 / 285 / 300	V6733 (UL)
8"	200	645	Globe / angle	Electrical / wet / dry	FxF, GxG	250 / 285 / 300	V6734 (UL)
10"	250	756	Globe / angle	Electrical / wet / dry	FxF	250 / 285 / 300	V6735 (UL)
12"	300	864	Globe / angle	Electrical / wet / dry	FxF	250 / 285 / 300	V6736 (UL)

**Note:**

1. The material of the main valve body & cover is also available with cast steel ASTM A216-WCB, nickel aluminum bronze ASTM B148, SS, etc.
2. It is simple design with main valve, solenoid valve and auxiliary pilot valve, without pre-assembly components (Water motor gong, etc.)
3. The flanged end connection is available with ANSI B16.42 Class 150 / 300, ANSI B16.5 Class 150 / 300.