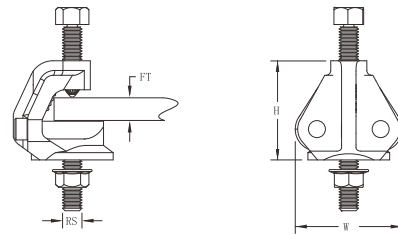


I-Beam attachment (Beam clamp)



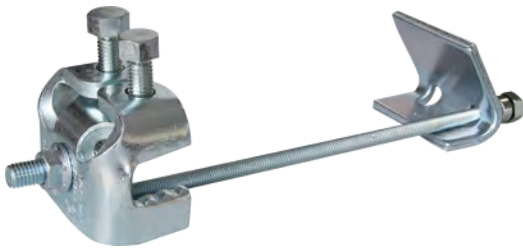
- Certificate: UL Listed / FM Approved
- Standard: UL 203A, refer to NFPA 13 seismic sway bracing
- Material: Cast iron
- Surface: Electro-galvanized
- Application: Attach to steel structure, perpendicular to the axis and the bottom of the I-Beam



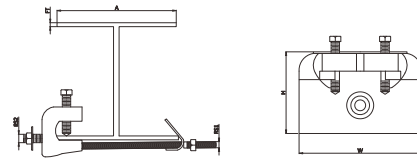
Available size

I-Beam flange		Rod size (RS)		Dimension (mm)		Ref. No.
THK	Width	UNC	Metric	H	W	
1/4" ~ 3/4" (6 ~ 19 mm)	4" ~ 14-1/2" (102 ~ 368 mm)	1/2"	M12	64	70	P6301

Adjustable I-Beam attachment (Beam clamp)



- Certificate: UL Listed / FM Approved
- Standard: UL 203A, refer to NFPA 13 seismic sway bracing
- Material: Carbon steel
- Surface: Electro-galvanized
- Application: Attach to steel structure, perpendicular to the axis and the bottom of the I-Beam



Available size

I-Beam flange		Rod size		Dimension (mm)		Ref. No.
THK	Width	RS1	RS2	H	W	
1/4" ~ 3/4" (6 ~ 19 mm)	4" ~ 8-1/2" (100 - 215 mm)	3/8" (M10)	1/2" (M12)	67	92	P6311
1/4" ~ 3/4" (6 ~ 19 mm)	4" ~ 14-1/2" (100 - 365 mm)	3/8" (M10)	1/2" (M12)	67	92	P6312
3/4" ~ 1-1/4" (19 ~ 32 mm)	4" ~ 18" (100- 455 mm)	3/8" (M10)	1/2" (M12)	79	92	P6313