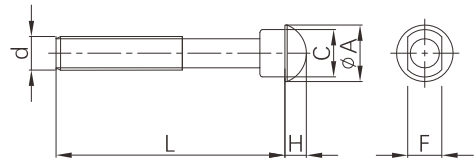


Metric oval neck track head bolt



- Standard: DIN 5903-1, BS 325
- Material: Carbon steel as ISO 898-1, Class 8.8
- Thread: ISO 261
- Surface: Zinc electroplated as ISO 2081 Fe/Zn5, or chromed as ISO 4520 Class 1A



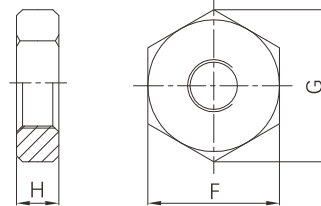
Available size

Bolt with coarse thread (d)	Size (mm)					Recommend bolt torque (N.m)	Ref. No.
	A	C	F	H	L		
M10	18.50	13.50	9.50	5.0	50 ~ 90	40 ~ 60	G9201
M12	23.50	17.50	12.30	8.0	70 ~ 110	110 ~ 135	G9202
M16	29.50	20.50	15.70	10.0	80 ~ 120	135 ~ 175	G9203
M20	38.00	27.00	18.30	12.5	90 ~ 130	175 ~ 245	G9204
M22	42.20	31.00	21.40	14.0	100 ~ 150	245 ~ 325	G9205

Metric heavy hexagon nut



- Standard: EN 20898-2
- Material: Carbon steel as ISO 898-2, Class 8
- Thread: ISO 261
- Surface: Zinc electroplated as ISO 2081 Fe/Zn5, or chromed as ISO 4520 Class 1A



Available size

Nut with coarse thread (D)	F (mm)		G (mm)	H (mm)		Ref. No.
	Min	Max	Min	Min	Max	
M10	15.73	16.00	17.70	8.04	8.40	G9301
M12	17.73	18.00	20.03	10.37	10.80	G9302
M16	23.16	24.00	26.75	14.10	14.80	G9303
M20	29.16	30.00	32.95	16.90	18.00	G9304
M22	33.00	34.00	37.29	18.10	19.40	G9305