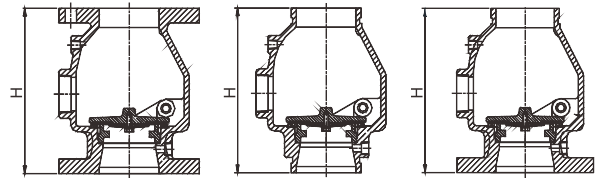


## Alarm check valve

Alarm check valve is mainly used in wet pipe fire protection system, which prevents the reverse flow and controls water pressure. It automatically actuates alarm when water flows into the system upon fire sprinkler operation.



- Certificate: UL Listed / FM Approved
- Standard: UL 193 / UL 753, FM 1041
- Connection: Flanged ANSI B16.1 Class 125, EN 1092 PN 16, grooved, etc.
- Feature: Check type, vertical installation only
- Temperature: 0°C to 68°C
- W. pressure: 300 psi
- Surface: FBE coating as AWWA C550



### Main parts and material

<b>Body / cover / disc</b>	Ductile iron as ASTM A536, 65-45-12	<b>Valve trim</b>	Bronze body seat, SS hinge pin and spring
<b>Standard Accessories</b>	Complete pipelines, including ball valve, check valve, drain valve, strainer, etc.	<b>Pre-assembly components</b>	Retard chamber, water motor gong, alarm pressure switch, pressure gauge

### Available size (Source 1 with UL/FM)

Size		H	Connection	Working pressure (psi)	Ref. No.
Inch	DN	mm			
3"	80	257	FxF, GxG, FxG	300	V6501 (UL/FM)
4"	100	270	FxF, GxG, FxG	300	V6502 (UL/FM)
6"	150	340	FxF, GxG, FxG	300	V6503 (UL/FM)
8"	200	432	FxF, GxG, FxG	300	V6504 (UL/FM)

**Note:** The flanged end connection is available with ANSI B16.5 Class 150, ANSI B16.42 Class 150, BS 4504 PN 16, or DIN 2532 PN 16.

# Alarm check valve

## Available size (Source 2 with FM)

Size		H	Connection	Working pressure (psi)	Ref. No.
Inch	DN	mm			
2"	50	233	FxF, GxG, FxG	300	V6511 (FM)
2-1/2"	65	236	FxF, GxG, FxG	300	V6512 (FM)
3"	80	245	FxF, GxG, FxG	300	V6513 (FM)
4"	100	316	FxF, GxG, FxG	300	V6514 (FM)
5"	125	386	FxF, GxG, FxG	300	V6515 (FM)
6"	150	390	FxF, GxG, FxG	300	V6516 (FM)
8"	200	438	FxF, GxG, FxG	300	V6517 (FM)
10"	250	535	FxF, GxG, FxG	300	V6518 (FM)
12"	300	622	FxF, GxG, FxG	300	V6519 (FM)

**Note:** The flanged end connection is available with ANSI B16.5 Class 150, ANSI B16.42 Class 150, BS 4504 PN 16, or DIN 2532 PN 16.

## Available size (Source 3 with UL/FM)

Size		H	Connection	Working pressure (psi)	Ref. No.
Inch	DN	mm			
3"	80	320	GxG	300	V6521 (UL/FM)
4"	100	382	GxG	300	V6522 (UL/FM)
6"	150	406	GxG	300	V6523 (UL/FM)
8"	200	446	GxG	300	V6524 (UL/FM)
3"	80	241	FxF	250 / 232	V6525 (UL)
4"	100	292	FxF	250 / 232	V6526 (UL)
6"	150	356	FxF	250 / 232	V6527 (UL)
8"	200	495	FxF	232	V6528 (UL)

**Note:** The flanged end connection is available with ASME B16.1 Class 125, ANSI B16.42 Class 150, BS 4504 PN 16, or DIN 2532 PN 16.

## Available size (Source 4 with UL/FM)

Size		H	Connection	Working pressure (psi)	Ref. No.
Inch	DN	mm			
4"	100	254	FxF, GxG, FxG	300	V6541 (UL/FM)
6"	150	305	FxF, GxG, FxG	300	V6542 (UL/FM)
8"	200	356	FxF, GxG, FxG	300	V6543 (UL/FM)

**Note:** The flanged end connection is available with ASME B16.1 Class 125 or BS 4504 PN 16, or DIN 2532 PN 16.