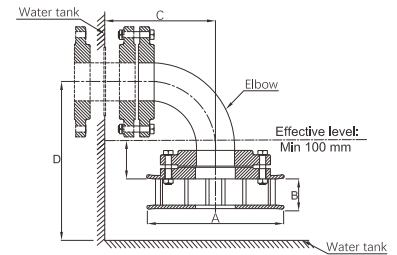
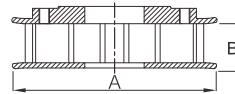


Vortex inhibitor (Anti-vortex plate)

Vortex inhibitor is equipped at the inlet of suction pipe of suction tank. It reduces vortices and dead water area, minimizes the air entrainment into the pump pipeline, so to ensure the pump & tank working at its max efficiency.



- Certificate: ISO
- Standard: EN 12845, NFPA 20 / 22, GB 50974
- Material: SS 304, SS 316, etc.
- Connection: Flanged as ANSI B16.5 Class 150, EN 1092-1 PN16
- Temperature: 0°C to 120°C, water
- W. pressure: 300 psi
- Effective level: Min 100 mm
- Installation: Up and down, both available
- Surface: Rough SS / red painting



Available Size (Without accessories)

Size		Dimension (mm)				Accessories	Connection	Working pressure (psi)	Ref. No.
Inch	DN	A	B	C	D				
2"	50	216	55	300	180	/	Class 150 / PN16	300	U5101
2-1/2"	65	222	55	300	185	/	Class 150 / PN16	300	U5102
3"	80	230	55	310	194	/	Class 150 / PN16	300	U5103
4"	100	425	60	412	244	/	Class 150 / PN16	300	U5104
6"	150	620	95	512	343	/	Class 150 / PN16	300	U5105
8"	200	795	115	614	487	/	Class 150 / PN16	300	U5106
10"	250	1030	130	715	535	/	Class 150 / PN16	300	U5107
12"	300	1230	155	816	650	/	Class 150 / PN16	300	U5108
14"	350	1232	191	1045	833	/	Class 150 / PN16	300	U5109
16"	400	1232	191	1180	925	/	Class 150 / PN16	300	U5110
18"	450	1232	209	1210	1026	/	Class 150 / PN16	300	U5111
20"	500	1232	209	1300	1130	/	Class 150 / PN16	300	U5112
24"	600	1400	400	1510	1250	/	Class 150 / PN16	300	U5113
28"	700	1500	400	1767	1467	/	Class 150 / PN16	300	U5114

Note: For flanged connection, it is available with ANSI B16.1 Class 125 / 250, B16.42 Class 150 / 300, EN 1092-2 PN10 / PN16 / PN25, etc.

Vortex inhibitor (Anti-vortex plate)

Available Size (Assembly, with accessories)

Size		Dimension (mm)				Accessories*	Connection	Working pressure (psi)	Ref. No.
Inch	DN	A	B	C	D				
2"	50	216	55	300	180	Yes	Class 150 / PN16	300	U5121
2-1/2"	65	222	55	300	185	Yes	Class 150 / PN16	300	U5122
3"	80	230	55	310	194	Yes	Class 150 / PN16	300	U5123
4"	100	425	60	412	244	Yes	Class 150 / PN16	300	U5124
6"	150	620	95	512	343	Yes	Class 150 / PN16	300	U5125
8"	200	795	115	614	487	Yes	Class 150 / PN16	300	U5126
10"	250	1030	130	715	535	Yes	Class 150 / PN16	300	U5127
12"	300	1230	155	816	650	Yes	Class 150 / PN16	300	U5128
14"	350	1232	191	1045	833	Yes	Class 150 / PN16	300	U5129
16"	400	1232	191	1180	925	Yes	Class 150 / PN16	300	U5130
18"	450	1232	209	1210	1026	Yes	Class 150 / PN16	300	U5131
20"	500	1232	209	1300	1130	Yes	Class 150 / PN16	300	U5132
24"	600	1400	400	1510	1250	Yes	Class 150 / PN16	300	U5133
28"	700	1500	400	1767	1467	Yes	Class 150 / PN16	300	U5134

Note:

- * For anti-vortex plate assembly with accessories, it includes 5 parts: anti-vortex plate, long radius 5D elbow (Elbow pipe/bend), mating slip on flange x 2, mating fasteners x 2 (Bolt, nut, and washer), and mating gasket x 2.
- For flanged connection, it is available with ANSI B16.1 Class 125 / 250, B16.42 Class 150 / 300, EN 1092-2 PN10 / PN16 / PN25, etc.