

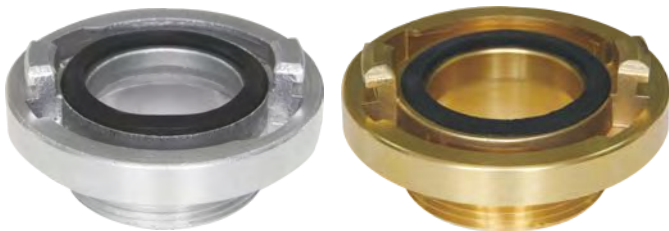


Storz adapter with female thread

- Certificate: ISO
- Standard: DIN 14306 / 07 / 08 / 09
- Material: Aluminum / brass / stainless steel
- Feature: Storz to threaded
- Surface: Anodized / rough brass, etc.

Available size

Size	Material	Abbreviation	Lug KA (mm)	Female threaded end	Working pressure (bar)	Ref. No.
DN 40 (1.5")	AL / brass / SS	Storz 38	51	BSPP (G) / NH / NPT, 1.5"	16	FE5221
DN 50 (2")	AL / brass / SS	Storz C 52	66	BSPP (G) / NH / NPT, 2"	16	FE5222
DN 65 (2.5")	AL / brass / SS	Storz 65	81	BSPP (G) / NH / NPT, 2.5"	16	FE5223
DN 80 (3")	AL / brass / SS	Storz B 75	89	BSPP (G) / NH / NPT, 3"	16	FE5224
DN 80 (3") x DN 65 (2.5")	AL / brass / SS	Storz B 75	89	BSPP (G) / NH / NPT, 2.5"	16	FE5225
DN 100 (4")	AL / brass / SS	Storz 100	115	BSPP (G) / NH / NPT, 4"	16	FE5226
DN 110 (4.25") x DN 125 (4.5")	AL / brass / SS	Storz A 110	133	BSPP (G) / NH / NPT, 4.5"	16	FE5227



Storz adapter with male thread

- Certificate: ISO
- Standard: DIN 14306 / 07 / 08 / 09
- Material: Aluminum / brass / stainless steel
- Feature: Storz to threaded
- Surface: Anodized / rough brass, etc.

Available size

Size	Material	Abbreviation	Lug KA (mm)	Female threaded end	Working pressure (bar)	Ref. No.
DN 40 (1.5")	AL / brass / SS	Storz 38	51	BSPP (G) / NH / NPT, 1.5"	16	FE5231
DN 50 (2")	AL / brass / SS	Storz C 52	66	BSPP (G) / NH / NPT, 2"	16	FE5232
DN 65 (2.5")	AL / brass / SS	Storz 65	81	BSPP (G) / NH / NPT, 2.5"	16	FE5233
DN 65 (2.5") x DN 40 (1.5")	AL / brass / SS	Storz 65	81	BSPP (G) / NH / NPT, 1.5"	16	FE5234
DN 80 (3")	AL / brass / SS	Storz B 75	89	BSPP (G) / NH / NPT, 3"	16	FE5235
DN 100 (4")	AL / brass / SS	Storz 100	115	BSPP (G) / NH / NPT, 4"	16	FE5236
DN 110 (4.25")	AL / brass / SS	Storz A 110	133	BSPP (G) / NH / NPT, 4"	16	FE5237