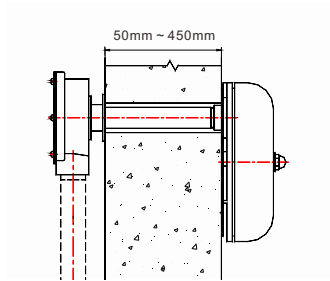


## Water motor gong (Water motor alarm)



- Certificate: UL Listed / FM Approved
- Standard: UL 753, comply to NFPA 13, 13D, 13R, 72
- Material: Aluminum alloy motor and gong, SS 304 drive shaft and striker, etc.
- Mounting wall: Rigid, thickness 50 - 450mm
- W. pressure: 7 ~ 300 psi
- Surface: Red or aluminum



### Available size

Wall for mounting (mm)	Inlet	Drain outlet	Sound	Y strainer	Working pressure (psi)	Ref. No.
50 - 450	3/4", NPT or BSPT	1", NPT or BSPT	90 dB	No	7-300	V9101 (UL)
50 - 450	3/4", NPT or BSPT	1", NPT or BSPT	90 dB	No	7-300	V9102 (FM)
50 - 450	3/4", NPT or BSPT	1", NPT or BSPT	90 dB	Yes	7-300	V9103 (UL/FM)

**Note:** It includes standard trim components, including Y strainer, galvanized steel nipples and cast iron pipe fittings.

## Retard chamber



- Certificate: UL Listed / FM Approved
- Standard: Comply to NFPA 25
- Material: Cast iron, carbon steel, etc.
- Function: Reduce false alarms due to water pressure surge
- Water pressure: 300 psi
- Surface: Red coating, black

### Available size

Inlet	Outlet	Body	Bushing	Ref. No.
1/2", NPT	3/4", NPT	Cast iron / carbon steel	Cast Iron	V9111

**Note:** It is UL/FM certified when used with different specific alarm check valve.