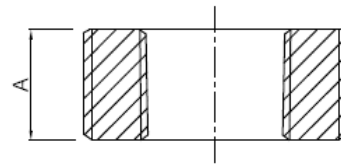


Threaded flush bushing



- Certificate: ISO
- Standard: Refer to ASME B16.11
- Material: Forged carbon steel ASTM A105
Forged SS ASTM A182, F304 / F316L
- Thread: NPT / BSPT
- W. pressure: ≤ Class 6000
- Surface: Oiled / hot dip galvanized
Pickling white, etc.



Available size

| NPS | Size | | Min length | Ref. No. |
|-----------------|---------|-------------|------------|----------|
| | DN | OD (mm) | A (mm) | |
| 1/2" x 3/8" | 15 x 10 | 21.3 x 17.1 | 14 | N5801 |
| 3/4" x 1/2" | 20 x 15 | 26.7 x 21.3 | 16 | N5802 |
| 1" x 1/2" | 25 x 15 | 33.4 x 21.3 | 19 | N5803 |
| 1" x 3/4" | 25 x 20 | 33.4 x 26.7 | 19 | N5804 |
| 1-1/4" x 1/2" | 32 x 15 | 42.2 x 21.3 | 21 | N5805 |
| 1-1/4" x 3/4" | 32 x 20 | 42.2 x 26.7 | 21 | N5806 |
| 1-1/4" x 1" | 32 x 25 | 42.2 x 33.4 | 21 | N5807 |
| 1-1/2" x 1/2" | 40 x 15 | 48.3 x 21.3 | 21 | N5808 |
| 1-1/2" x 3/4" | 40 x 20 | 48.3 x 26.7 | 21 | N5809 |
| 1-1/2" x 1" | 40 x 25 | 48.3 x 33.4 | 21 | N5810 |
| 1-1/2" x 1-1/4" | 40 x 32 | 48.3 x 42.2 | 21 | N5811 |
| 2" x 1/2" | 50 x 15 | 60.3 x 21.3 | 22 | N5812 |
| 2" x 3/4" | 50 x 20 | 60.3 x 26.7 | 22 | N5813 |
| 2" x 1" | 50 x 25 | 60.3 x 33.4 | 22 | N5814 |
| 2" x 1-1/4" | 50 x 32 | 60.3 x 42.2 | 22 | N5815 |
| 2" x 1-1/2" | 50 x 40 | 60.3 x 48.3 | 22 | N5816 |

Threaded flush bushing

Available size

| NPS | Size | | Min length | Ref. No. |
|-----------------|----------|--------------|------------|----------|
| | DN | OD (mm) | A (mm) | |
| 2-1/2" x 1/2" | 65 x 15 | 73.0 x 21.3 | 27 | N5817 |
| 2-1/2" x 3/4" | 65 x 20 | 73.0 x 26.7 | 27 | N5818 |
| 2-1/2" x 1" | 65 x 25 | 73.0 x 33.4 | 27 | N5819 |
| 2-1/2" x 1-1/4" | 65 x 32 | 73.0 x 42.2 | 27 | N5820 |
| 2-1/2" x 1-1/2" | 65 x 40 | 73.0 x 48.3 | 27 | N5821 |
| 2-1/2" x 2" | 65 x 50 | 73.0 x 60.3 | 27 | N5822 |
| 3" x 1/2" | 80 x 15 | 88.9 x 21.3 | 28 | N5823 |
| 3" x 3/4" | 80 x 20 | 88.9 x 26.7 | 28 | N5824 |
| 3" x 1" | 80 x 25 | 88.9 x 33.4 | 28 | N5825 |
| 3" x 1-1/4" | 80 x 32 | 88.9 x 42.2 | 28 | N5826 |
| 3" x 1-1/2" | 80 x 40 | 88.9 x 48.3 | 28 | N5827 |
| 3" x 2" | 80 x 50 | 88.9 x 60.3 | 28 | N5828 |
| 3" x 2-1/2" | 80 x 65 | 88.9 x 73.0 | 28 | N5829 |
| 4" x 1/2" | 100 x 15 | 114.3 x 21.3 | 32 | N5830 |
| 4" x 3/4" | 100 x 20 | 114.3 x 26.7 | 32 | N5831 |
| 4" x 1" | 100 x 25 | 114.3 x 33.4 | 32 | N5832 |
| 4" x 1-1/4" | 100 x 32 | 114.3 x 42.2 | 32 | N5833 |
| 4" x 1-1/2" | 100 x 40 | 114.3 x 48.3 | 32 | N5834 |
| 4" x 2" | 100 x 50 | 114.3 x 60.3 | 32 | N5835 |
| 4" x 2-1/2" | 100 x 65 | 114.3 x 73.0 | 32 | N5836 |
| 4" x 3" | 100 x 80 | 114.3 x 88.9 | 32 | N5837 |

Note: Bushings are not identified by class designation, and they may be used for ratings up to Class 6000 designation