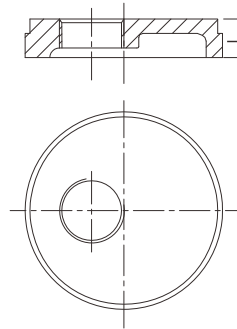


## Grooved drain cap with eccentric hole



- Certificate: UL Listed / FM Approved
- Standard: ANSI / UL 213C
- Material: Ductile iron ASTM A536, 65-45-12
- Eccentric hole: Female thread, NPT / BSPT
- Rated pressure: 300 ~ 500 psi
- Surface: Red painting / hot dip galvanized



### Available size

Inch	Size		End to end L (mm)	Ref. No.
	DN	mm		
1-1/2" x 1"	40 x 25	48.3 x 33.7	24	G4201 (ISO)
2" x 1/2"	50 x 15	60.3 x 21.3	24	G4202 (ISO)
2" x 1"	50 x 25	60.3 x 33.7	25	G4203 (UL/FM)
2" x 1-1/2"	50 x 40	60.3 x 48.3	25	G4204 (UL)
2-1/2" x 1/2"	65 x 15	73.0 x 21.3	24	G4205 (ISO)
2-1/2" x 1"	65 x 25	73.0 x 33.7	25	G4206 (UL/FM)
2-1/2" x 1"	65 x 25	76.1 x 33.7	24	G4207 (UL/FM)
2-1/2" x 1-1/2"	65 x 40	76.1 x 48.3	25	G4208 (UL/FM)
2-1/2" x 2"	65 x 50	76.1 x 60.3	25	G4209 (UL/FM)
3" x 1/2"	80 x 15	88.9 x 21.3	24	G4210 (ISO)
3" x 1"	80 x 25	88.9 x 33.7	24	G4211 (UL/FM)
3" x 1-1/2"	80 x 40	88.9 x 48.3	24	G4212 (UL/FM)
3" x 2"	80 x 50	88.9 x 60.3	24	G4213 (UL/FM)
4" x 1/2"	100 x 15	114.3 x 21.3	25	G4214 (ISO)
4" x 1"	100 x 25	114.3 x 33.7	27	G4215 (UL/FM)

## Grooved drain cap with eccentric hole

### Available size

Size			End to end	Ref. No.
Inch	DN	mm	L (mm)	
4" x 1-1/2"	100 x 40	114.3 x 48.3	27	G4216 (UL/FM)
4" x 2"	100 x 50	114.3 x 60.3	27	G4217 (UL/FM)
5" x 1-1/2"	125 x 40	139.7 x 48.3	27	G4218 (UL/FM)
5" x 2"	125 x 50	139.7 x 60.3	27	G4219 (UL/FM)
6" x 1-1/2"	150 x 40	165.1 x 48.3	27	G4220 (UL/FM)
6" x 1"	150 x 25	168.3 x 33.7	25	G4221 (UL/FM)
6" x 1-1/2"	150 x 40	168.3 x 48.3	27	G4222 (UL/FM)
6" x 2"	150 x 50	168.3 x 60.3	27	G4223 (UL/FM)
8" x 1-1/2"	200 x 40	219.1 x 48.3	30	G4224 (UL/FM)
8" x 2"	200 x 50	219.1 x 60.3	30	G4225 (UL/FM)