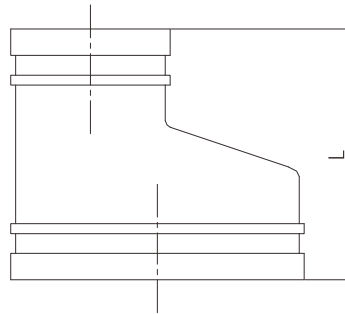


Grooved eccentric reducer



- Certificate: UL Listed / FM Approved
- Standard: ANSI / UL 213C
- Material: Ductile iron ASTM A536, 65-45-12
- Rated pressure: 300 ~ 500 psi
- Surface: Red painting / hot dip galvanized



Available size

Size			End to end, L (mm)		Ref. No.
Inch	DN	mm	Short	Long	
2-1/2" x 2"	65 x 50	76.1 x 60.3	64	/	G3201 (ISO)
3" x 2"	80 x 50	88.9 x 60.3	64	89	G3202 (UL/FM)
3" x 2-1/2"	80 x 65	88.9 x 73.0	64	/	G3203 (UL/FM)
3" x 2-1/2"	80 x 65	88.9 x 76.1	64	/	G3204 (UL/FM)
4" x 2"	100 x 50	114.3 x 60.3	76	102	G3205 (UL/FM)
4" x 2-1/2"	100 x 65	114.3 x 73.0	76	/	G3206 (UL/FM)
4" x 2-1/2"	100 x 65	114.3 x 76.1	76	102	G3207 (UL/FM)
4" x 3"	100 x 80	114.3 x 88.9	76	102	G3208 (UL/FM)
5" x 2-1/2"	125 x 65	139.7 x 76.1	89	/	G3209 (UL/FM)
5" x 3"	125 x 80	139.7 x 88.9	89	/	G3210 (UL/FM)
5" x 4"	125 x 100	139.7 x 114.3	89	127	G3211 (UL/FM)
6" x 2-1/2"	150 x 65	165.1 x 76.1	102	/	G3212 (UL/FM)
6" x 3"	150 x 80	165.1 x 88.9	102	140	G3213 (UL/FM)
6" x 4"	150 x 100	165.1 x 114.3	102	140	G3214 (UL/FM)
6" x 5"	150 x 125	165.1 x 139.7	102	140	G3215 (UL/FM)

Grooved eccentric reducer

Available size

Size			End to end, L (mm)		Ref. No.
Inch	DN	mm	Short	Long	
6" x 3"	150 x 80	168.3 x 88.9	102	140	G3216 (UL/FM)
6" x 4"	150 x 100	168.3 x 114.3	102	140	G3217 (UL/FM)
6" x 5"	150 x 125	168.3 x 139.7	102	140	G3218 (UL/FM)
8" x 3"	200 x 80	219.1 x 88.9	127	/	G3219 (UL/FM)
8" x 4"	200 x 100	219.1 x 114.3	127	215	G3220 (UL/FM)
8" x 5"	200 x 125	219.1 x 139.7	127	/	G3221 (UL/FM)
8" x 6"	200 x 150	219.1 x 165.1	127	215	G3222 (UL/FM)
8" x 6"	200 x 150	219.1 x 168.3	127	215	G3223 (UL/FM)
10" x 6"	250 x 150	273.0 x 165.1	152	/	G3224 (UL/FM)
10" x 6"	250 x 150	273.0 x 168.3	152	/	G3225 (UL/FM)
10" x 8"	250 x 200	273.0 x 219.1	152	215	G3226 (UL/FM)