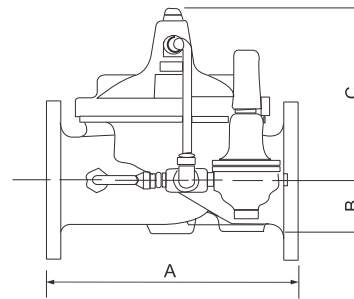


## Flanged globe type pressure reducing valve

Pressure reducing valve is pilot-operated pressure control valve used in sprinkler and standpipe systems. It automatically reduces a higher inlet pressure to a steady lower outlet pressure, without changing flow rate and inlet pressure.



- Certificate: UL Listed / FM Approved, CE Certified
- Standard: UL 1739 / NFPA 13 / NFPA 14
- Connection: Flanged as B16.42 Class 150 / 300, B16.1 Class 125 / 250, EN 1092-2 PN16
- Adjustment: 50 ~ 175 / 30 ~ 165 psi, etc.
- Temperature: Max 82°C, water
- W. pressure: 200 / 250 / 300 / 365 psi
- Surface: FBE coating as AWWA C550



### Main parts and material

<b>Body</b>	Ductile iron as ASTM A536, 65-45-12	<b>Cover</b>	Ductile iron as ASTM A536, 65-45-12
<b>Main valve trim</b>	SS seat, SS stem	<b>Pilot control</b>	Cast bronze with SS trim

### Available size (Source 1 with UL)

Size		Pressure adjustment (psi)	A	Connection	Working pressure (psi)	Ref. No.
Inch	DN		mm			
1-1/2"	40	50 ~ 175	216 / 229	Class 150 / 300	250 / 300	V6101 (UL)
2"	50	30 ~ 165	238 / 254	Class 150 / 300	250 / 300	V6102 (UL)
2-1/2"	65	50 ~ 175	279 / 295	Class 150 / 300	250 / 300	V6103 (UL)
3"	80	50 ~ 175	305 / 337	Class 150 / 300	250 / 300	V6104 (UL)
4"	100	50 ~ 175	381 / 397	Class 150 / 300	250 / 300	V6105 (UL)
6"	150	50 ~ 175	508 / 533	Class 150 / 300	250 / 300	V6106 (UL)
8"	200	50 ~ 175	645 / 670	Class 150 / 300	250 / 300	V6107 (UL)
10"	250	50 ~ 175	756 / 790	Class 150 / 300	250 / 300	V6108 (UL)
12"	300	50 ~ 175	864 / 902	Class 150 / 300	250 / 300	V6109 (UL)

# Flanged globe type pressure reducing valve

## Available size (Source 2 with UL)

Size		Pressure adjustment (psi)	A	Connection	Working pressure (psi)	Ref. No.
Inch	DN		mm			
1-1/2"	40	65 ~ 165	200	Class 125 / 250 / PN16	200 / 300 / 230	V6111 (UL)
2"	50	65 ~ 165	230	Class 125 / 250 / PN16	200 / 300 / 230	V6112 (UL)
2-1/2"	65	65 ~ 165	290	Class 125 / 250 / PN16	200 / 300 / 230	V6113 (UL)
3"	80	65 ~ 165	310	Class 125 / 250 / PN16	200 / 300 / 230	V6114 (UL)
4"	100	65 ~ 165	350	Class 125 / 250 / PN16	200 / 300 / 230	V6115 (UL)
5"	125	65 ~ 165	400	Class 125 / 250 / PN16	200 / 300 / 230	V6116 (UL)
6"	150	65 ~ 165	480	Class 125 / 250 / PN16	200 / 300 / 230	V6117 (UL)
8"	200	65 ~ 165	600	Class 125 / 250 / PN16	200 / 300 / 230	V6118 (UL)
10"	250	65 ~ 165	730	Class 125 / 250 / PN16	200 / 300 / 230	V6119 (UL)

## Available size (Source 2 with FM)

Size		Pressure adjustment (psi)	A	Connection	Working pressure (psi)	Ref. No.
Inch	DN		mm			
2"	50	65 ~ 165	233	Class 125 / 250 / PN16	300	V6121 (FM)
2-1/2"	65	65 ~ 165	290	Class 125 / 250 / PN16	300	V6122 (FM)
3"	80	65 ~ 165	310	Class 125 / 250 / PN16	300	V6123 (FM)
4"	100	65 ~ 165	356	Class 125 / 250 / PN16	300	V6124 (FM)
5"	125	65 ~ 165	370	Class 125 / 250 / PN16	300	V6125 (FM)
6"	150	65 ~ 165	436	Class 125 / 250 / PN16	300	V6126 (FM)
8"	200	65 ~ 165	530	Class 125 / 250 / PN16	300	V6127 (FM)
10"	250	65 ~ 165	636	Class 125 / 250 / PN16	300	V6128 (FM)

## Available size (Source 3 with UL/FM)

Size		Pressure adjustment (psi)	A	Connection	Working pressure (psi)	Ref. No.
Inch	DN		mm			
3"	80	80 ~ 175	349	Class 125 / PN16	300	V6131 (UL/FM)
4"	100	90 ~ 175	425	Class 125 / PN16	300	V6132 (UL/FM)
6"	150	80 ~ 175	569	Class 125 / PN16	300	V6133 (UL/FM)
8"	200	80 ~ 175	697	Class 125 / PN16	300	V6134 (FM)

# Flanged globe type pressure reducing valve

## Available size (Source 4 with CE)

Size		Pressure adjustment (psi)	A	Connection	Working pressure (psi)	Ref. No.
Inch	DN		mm			
2"	50	29 ~ 174	206 / 203	Class 125 / PN16	200 / 230	V6141 (CE)
2-1/2"	65	29 ~ 174	211 / 216	Class 125 / PN16	200 / 230	V6142 (CE)
3"	80	29 ~ 174	249 / 241	Class 125 / PN16	200 / 230	V6143 (CE)
4"	100	29 ~ 174	320 / 292	Class 125 / PN16	200 / 230	V6144 (CE)
6"	150	29 ~ 174	414 / 356	Class 125 / PN16	200 / 230	V6145 (CE)
8"	200	29 ~ 174	500 / 495	Class 125 / PN16	200 / 230	V6146 (CE)
10"	250	29 ~ 174	605 / 622	Class 125 / PN16	200 / 230	V6147 (CE)
12"	300	29 ~ 174	724 / 698	Class 125 / PN16	200 / 230	V6148 (CE)
14"	350	29 ~ 174	734 / 787	Class 125 / PN16	200 / 230	V6149 (CE)
16"	400	29 ~ 174	991 / 914	Class 125 / PN16	200 / 230	V6150 (CE)

## Available size (Source 5 with UL/FM)

Size		Pressure adjustment (psi)	A	Connection	Working pressure (psi)	Ref. No.
Inch	DN		mm			
2"	50	60 ~ 175	230 / 238	Class 150 / 300	250 / 365	V6151 (UL/FM)
2-1/2"	65	60 ~ 175	235 / 241	Class 150 / 300	250 / 365	V6152 (UL/FM)
3"	80	60 ~ 175	310 / 326	Class 150 / 300	250 / 365	V6153 (UL/FM)
4"	100	60 ~ 175	350 / 368	Class 150 / 300	250 / 365	V6154 (UL/FM)
6"	150	60 ~ 175	480 / 506	Class 150 / 300	250 / 365	V6155 (UL/FM)
8"	200	60 ~ 175	600 / 626	Class 150 / 300	250 / 365	V6156 (UL/FM)
10"	250	60 ~ 175	730 / 730	Class 150 / 300	250 / 365	V6157 (UL/FM)
12"	300	60 ~ 175	850 / 888	Class 150 / 300	250 / 300	V6158 (UL/FM)
14"	350	60 ~ 175	980 / 980	Class 150 / 300	250 / 300	V6159 (UL/FM)
16"	400	60 ~ 175	1100 / 1100	Class 150 / 300	250 / 300	V6160 (UL/FM)

**Note:** For flanged connection, it is also available with EN 1092-2 PN 16 or PN 25, etc.