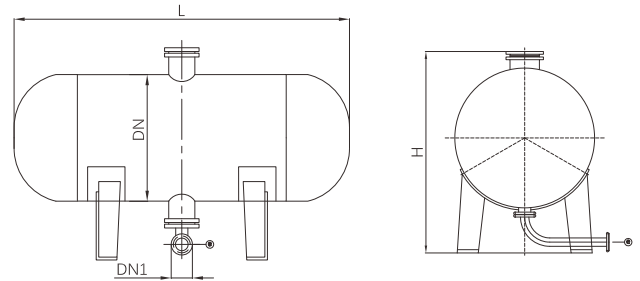


Horizontal pump pressure tank

Pressure tank is a pressurized vessel where water and air are separated by a flexible diaphragm allowing the water to expand and absorb pressure surges. It provides water storage and decreases the running time of booster pump.



- Certificate: CE
- Standard: NFPA 20
- Connection: Flanged as ANSI B16.5 Class 150, EN 1092-1 PN16
- Temperature: Designed 80°C
- W. pressure: Designed 10 / 16 bar
- Surface: FBE coating as AWWA C550



Main parts and material

Body	Carbon steel / SS	Bracket	Carbon steel / SS
Inlet	Carbon steel, 4" flange	Diaphragm	EPDM rubber, water chamber & air chamber

Available size

Diameter (DN)	Capacity Vf (L)	Effective volume Ve (L)	Dimension (mm)		Inlet size (DN1)	Working pressure (bar)	Ref. No.
			L	H			
1000	1500	300 ~ 500	2062 / 2066	1581 / 1586	DN 100	10 / 16	U6201
1200	2540	500 ~ 850	2462 / 2466	1781 / 1787	DN 100	10 / 16	U6202
1400	3870	780 ~ 1300	2766 / 2770	1985 / 1999	DN 100	10 / 16	U6203
1600	5800	1200 ~ 1900	3166 / 3172	2185 / 2201	DN 100	10 / 16	U6204
1800	8270	1700 ~ 2800	3566 / 3574	2387 / 2403	DN 100	10 / 16	U6205
2000	11000	2200 ~ 3700	3818 / 3826	2587 / 2605	DN 100	10 / 16	U6206
2200	14100	2800 ~ 4700	4098 / 4108	2789 / 2807	DN 100	10 / 16	U6207
2400	17600	3520 ~ 5870	4300 / 4310	2991 / 3009	DN 100	10 / 16	U6208
2600	21700	4340 ~ 7230	4554 / 4562	3204 / 3212	DN 100	10 / 16	U6209