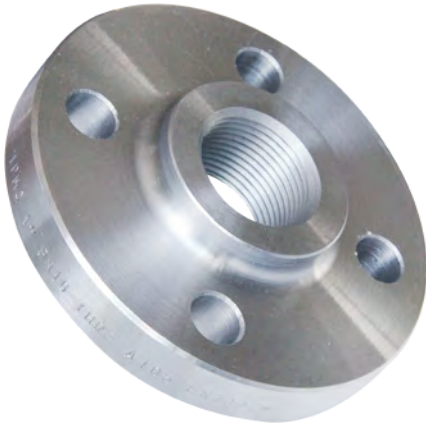
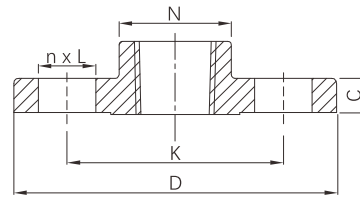


## Hubbed threaded flange



- Certificate: ISO
- Standard: EN 1092-1 Type 13, GB/T 9124.1
- Material: Forged carbon steel EN 10025-2 S235JR  
Forged SS equivalent to F304 / F316L
- Flange facing: FF / RF
- Thread: BSPP (Rp) / BSPT (Rc) / NPT
- Pressure rating: PN 16 / PN 10 / PN 25, etc.
- Surface: Oiled / hot dip galvanized  
Pickling white, etc.



### Available size of PN 16

Size			Rating class	Flange OD D (mm)	Bolt circle dia. K (mm)	Bolting (No.x hole)	Ref. weight (kg)	Ref. No.
NPS	DN	OD (mm)						
1/2"	15	21.3	PN 16	95	65	4 x 14	0.72	NE4401-PN16
3/4"	20	26.9	PN 16	105	75	4 x 14	1.04	NE4402-PN16
1"	25	33.7	PN 16	115	85	4 x 14	1.25	NE4403-PN16
1-1/4"	32	42.4	PN 16	140	100	4 x 18	1.81	NE4404-PN16
1-1/2"	40	48.3	PN 16	150	110	4 x 18	2.06	NE4405-PN16
2"	50	60.3	PN 16	165	125	4 x 18	2.39	NE4406-PN16
2-1/2"	65	73.0 / 76.1	PN 16	185	145	8 (4) x 18*	2.97	NE4407-PN16
3"	80	88.9	PN 16	200	160	8 x 18	3.78	NE4408-PN16
4"	100	114.3	PN 16	220	180	8 x 18	4.38	NE4409-PN16
5"	125	139.7	PN 16	250	210	8 x 18	6.07	NE4410-PN16
6"	150	165.1 / 168.3	PN 16	285	240	8 x 22	7.24	NE4411-PN16

**Note:** \* Size DN 65 with PN 16 / PN 10 can also be supplied with 4 holes, to match EN 1092-2 (Cast iron flange) and EN 1092-3 (Copper alloy flange) connection.

## Hubbed threaded flange

### Available size of PN 10

Size			Rating class	Flange OD D (mm)	Bolt circle dia. K (mm)	Bolting (No.x hole)	Ref. weight (kg)	Ref. No.
NPS	DN	OD (mm)						
1/2"	15	21.3	PN 10	95	65	4 x 14	0.72	NE4401-PN10
3/4"	20	26.9	PN 10	105	75	4 x 14	1.04	NE4402-PN10
1"	25	33.7	PN 10	115	85	4 x 14	1.25	NE4403-PN10
1-1/4"	32	42.4	PN 10	140	100	4 x 18	1.81	NE4404-PN10
1-1/2"	40	48.3	PN 10	150	110	4 x 18	2.06	NE4405-PN10
2"	50	60.3	PN 10	165	125	4 x 18	2.39	NE4406-PN10
2-1/2"	65	73.0 / 76.1	PN 10	185	145	8 (4) x 18*	2.97	NE4407-PN10
3"	80	88.9	PN 10	200	160	8 x 18	3.78	NE4408-PN10
4"	100	114.3	PN 10	220	180	8 x 18	4.38	NE4409-PN10
5"	125	139.7	PN 10	250	210	8 x 18	6.07	NE4410-PN10
6"	150	165.1 / 168.3	PN 10	285	240	8 x 22	7.24	NE4411-PN10

### Available size of PN 25

Size			Rating class	Flange OD D (mm)	Bolt circle dia. K (mm)	Bolting (No.x hole)	Ref. weight (kg)	Ref. No.
NPS	DN	OD (mm)						
1/2"	15	21.3	PN 25	95	65	4 x 14	0.72	NE4401-PN25
3/4"	20	26.9	PN 25	105	75	4 x 14	1.04	NE4402-PN25
1"	25	33.7	PN 25	115	85	4 x 14	1.25	NE4403-PN25
1-1/4"	32	42.4	PN 25	140	100	4 x 18	1.81	NE4404-PN25
1-1/2"	40	48.3	PN 25	150	110	4 x 18	2.06	NE4405-PN25
2"	50	60.3	PN 25	165	125	4 x 18	2.74	NE4406-PN25
2-1/2"	65	73.0 / 76.1	PN 25	185	145	8 x 18	3.65	NE4407-PN25
3"	80	88.9	PN 25	200	160	8 x 18	4.59	NE4408-PN25
4"	100	114.3	PN 25	235	190	8 x 22	6.10	NE4409-PN25
5"	125	139.7	PN 25	270	220	8 x 26	8.22	NE4410-PN25
6"	150	165.1 / 168.3	PN 25	300	250	8 x 26	10.6	NE4411-PN25