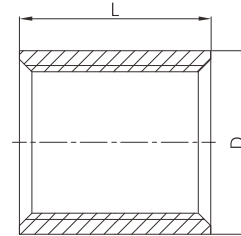


Equal socket (Medium and heavy type)



- Certificate: ISO
- Standard: EN 10241
- Material: As medium or heavy series tube
- Thread: BSPP / BSPT / NPT
- Hydro test: Min 50 bar
- Surface: Oiled / hot dip galvanized



Available size for medium series

Size			Thickness type	Min OD	Overall length	Ref. No.
NPS	DN	OD (mm)		D (mm)	L (mm)	
1/2"	15	21.3	Medium	26.6	34	NE2401
3/4"	20	26.9	Medium	31.8	36	NE2402
1"	25	33.7	Medium	39.5	43	NE2403
1-1/4"	32	42.4	Medium	48.3	48	NE2404
1-1/2"	40	48.3	Medium	54.5	48	NE2405
2"	50	60.3	Medium	66.2	56	NE2406
2-1/2"	65	76.1	Medium	82.0	65	NE2407
3"	80	88.9	Medium	95.0	71	NE2408
4"	100	114.3	Medium	121.4	83	NE2409
5"	125	139.7	Medium	146.3	92	NE2410
6"	150	165.1 / 168.3	Medium	173.3	92	NE2411

Note:

1. The internal thread shall be parallel BSPP as standard, but BSPT and NPT are also available.
2. Other length is available as customer request.

Equal socket (Medium and heavy type)

Available size for heavy series

Size			Thickness type	Min OD	Overall length	Ref. No.
NPS	DN	OD (mm)		D (mm)	L (mm)	
1/2"	15	21.3	Heavy	27.0	37	NE2421
3/4"	20	26.9	Heavy	32.5	39	NE2422
1"	25	33.7	Heavy	39.5	46	NE2423
1-1/4"	32	42.4	Heavy	49.0	51	NE2424
1-1/2"	40	48.3	Heavy	56.0	51	NE2425
2"	50	60.3	Heavy	68.0	60	NE2426
2-1/2"	65	76.1	Heavy	84.0	69	NE2427
3"	80	88.9	Heavy	98.0	75	NE2428
4"	100	114.3	Heavy	124.0	87	NE2429
5"	125	139.7	Heavy	151.0	96	NE2430
6"	150	165.1 / 168.3	Heavy	177.0	96	NE2431

Note:

1. The internal thread shall be parallel BSPP as standard, but BSPT and NPT are also available.
2. Other length is available as customer request.