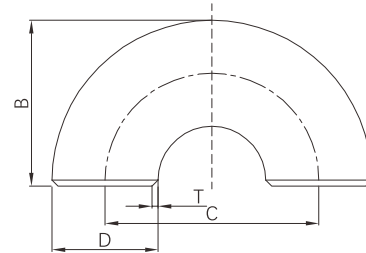


## Butt weld 180° return bend (Short radius)



- Certificate: ISO
- Standard: EN 10253-1 / EN 10253-2 / EN 10253-3
- Material: Carbon steel S235 / P235TR2  
SS equivalent to WP304 / WP316L
- Type: Short radius, 2D, R=1.0D
- W. Pressure: Equal to same straight pipe
- Surface: Black painting / hot dip galvanized  
Pickling white, etc.



### Available size

Size			Preferred T to EN 10253-2 (mm)	C (mm)	B (mm)	Ref. No.
NPS	DN	OD (mm)				
1/2"	15	21.3	2.0 / 2.6 / 3.2 / 4.0 / 5.0 / 7.1	50	36	NE0501
3/4"	20	26.9	2.3 / 2.6 / 3.2 / 4.0 / 4.5 / 5.6 / 8.0	50	39	NE0502
1"	25	33.7	2.6 / 3.2 / 4.0 / 4.5 / 5.6 / 6.3 / 8.8	50	42	NE0503
1-1/4"	32	42.4	2.6 / 3.6 / 4.0 / 5.0 / 6.3 / 8.0 / 10.0	64	53	NE0504
1-1/2"	40	48.3	2.6 / 3.6 / 4.0 / 5.0 / 6.3 / 8.0 / 10.0	76	62	NE0505
2"	50	60.3	2.9 / 3.6 / 4.0 / 5.6 / 7.1 / 8.8 / 11.0	102	81	NE0506
2-1/2"	65	76.1	2.9 / 3.6 / 5.6 / 7.1 / 8.0 / 10.0 / 14.2	127	102	NE0507
3"	80	88.9	3.2 / 4.0 / 5.6 / 8.0 / 8.8 / 11.0 / 16.0	152	121	NE0508
4"	100	114.3	3.6 / 4.5 / 6.3 / 8.8 / 11.0 / 14.2 / 17.5	203	159	NE0509
5"	125	139.7	4.0 / 5.0 / 6.3 / 10.0 / 12.5 / 16.0 / 20.0	254	197	NE0510
6"	150	165.1 / 168.3	4.0 / 4.5 / 5.6 / 7.1 / 11.0 / 14.2 / 17.5 / 22.2	305	237	NE0511
8"	200	219.1	4.5 / 6.3 / 7.1 / 8.0 / 12.5 / 16.0 / 17.5 / 22.2	406	313	NE0512
10"	250	273.0	5.0 / 6.3 / 8.8 / 10.0 / 12.5 / 16.0 / 22.2 / 30.0	508	391	NE0513
12"	300	323.9	5.6 / 7.1 / 8.8 / 10.0 / 12.5 / 17.5 / 25.0 / 32.0	610	467	NE0514
14"	350	355.6	5.6 / 8.0 / 10.0 / 12.5 / 16.0 / 20.0 / 28.0 / 36.0	711	533	NE0515
16"	400	406.4	6.3 / 8.8 / 10.0 / 12.5 / 17.5 / 22.2 / 30.0 / 40.0	813	610	NE0516
18"	450	457	6.3 / 10.0 / 11.0 / 12.5 / 17.5 / 22.2 / 32.0 / 45.0	914	686	NE0517
20"	500	508	6.3 / 10.0 / 11.0 / 12.5 / 17.5 / 25.0 / 36.0 / 50.0	1016	762	NE0518
24"	600	610	6.3 / 10.0 / 12.5 / 17.5 / 25.0 / 30.0 / 45.0 / 60.0	1220	914	NE0519