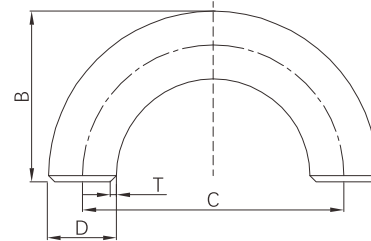


Butt weld 180° return bend (Long radius)

- Certificate: ISO
- Standard: EN 10253-1 / EN 10253-2 / EN 10253-3
- Material: Carbon steel S235 / P235TR2
SS equivalent to WP304 / WP316L
- Type: Long radius, 3D, R=1.5D
- W. Pressure: Equal to same straight pipe
- Surface: Black painting / hot dip galvanized
Pickling white, etc.



Available size

Size			Preferred T to EN 10253-2 (mm)	C (mm)	B (mm)	Ref. No.
NPS	DN	OD (mm)				
1/2"	15	21.3	2.0 / 2.6 / 3.2 / 4.0 / 5.0 / 7.1	76	49	NE0401
3/4"	20	26.9	2.3 / 2.6 / 3.2 / 4.0 / 4.5 / 5.6 / 8.0	76	51	NE0402
1"	25	33.7	2.6 / 3.2 / 4.0 / 4.5 / 5.6 / 6.3 / 8.8	76	56	NE0403
1-1/4"	32	42.4	2.6 / 3.6 / 4.0 / 5.0 / 6.3 / 8.0 / 10.0	95	69	NE0404
1-1/2"	40	48.3	2.6 / 3.6 / 4.0 / 5.0 / 6.3 / 8.0 / 10.0	114	82	NE0405
2"	50	60.3	2.9 / 3.6 / 4.0 / 5.6 / 7.1 / 8.8 / 11.0	152	106	NE0406
2-1/2"	65	76.1	2.9 / 3.6 / 5.6 / 7.1 / 8.0 / 10.0 / 14.2	190	133	NE0407
3"	80	88.9	3.2 / 4.0 / 5.6 / 8.0 / 8.8 / 11.0 / 16.0	228	159	NE0408
4"	100	114.3	3.6 / 4.5 / 6.3 / 8.8 / 11.0 / 14.2 / 17.5	304	210	NE0409
5"	125	139.7	4.0 / 5.0 / 6.3 / 10.0 / 12.5 / 16.0 / 20.0	380	260	NE0410
6"	150	165.1 / 168.3	4.0 / 4.5 / 5.6 / 7.1 / 11.0 / 14.2 / 17.5 / 22.2	457	313	NE0411
8"	200	219.1	4.5 / 6.3 / 7.1 / 8.0 / 12.5 / 16.0 / 17.5 / 22.2	610	414	NE0412
10"	250	273.0	5.0 / 6.3 / 8.8 / 10.0 / 12.5 / 16.0 / 22.2 / 30.0	762	518	NE0413
12"	300	323.9	5.6 / 7.1 / 8.8 / 10.0 / 12.5 / 17.5 / 25.0 / 32.0	914	619	NE0414
14"	350	355.6	5.6 / 8.0 / 10.0 / 12.5 / 16.0 / 20.0 / 28.0 / 36.0	1066	711	NE0415
16"	400	406.4	6.3 / 8.8 / 10.0 / 12.5 / 17.5 / 22.2 / 30.0 / 40.0	1220	813	NE0416
18"	450	457	6.3 / 10.0 / 11.0 / 12.5 / 17.5 / 22.2 / 32.0 / 45.0	1372	914	NE0417
20"	500	508	6.3 / 10.0 / 11.0 / 12.5 / 17.5 / 25.0 / 36.0 / 50.0	1524	1016	NE0418
24"	600	610	6.3 / 10.0 / 12.5 / 17.5 / 25.0 / 30.0 / 45.0 / 60.0	1828	1219	NE0419