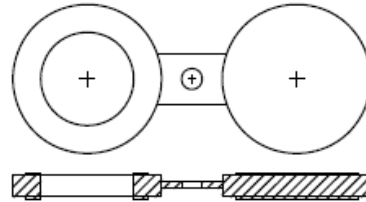


## Spectacle blind flange (Figure-8 blank)



- Certificate: ISO
- Standard: ASME B16.48, HG/T 21547-2016
- Material: Forged carbon steel ASTM A105  
Forged SS ASTM A182, F304 / F316L
- Flange facing: FF / RF
- Rated pressure: Class 150 / 300, etc.
- Surface: Oiled / hot dip galvanized  
Pickling white, etc.



### Available size (Class 150 RF)

Size			Rating class	Inside diameter B (mm)	Outside diameter O (mm)	Centerline A (mm)	Thickness t (mm)	Ref. No.
NPS	DN	OD (mm)						
1/2"	15	21.3	Class 150 RF	16	45	60	3.0	N9201-150
3/4"	20	26.7	Class 150 RF	21	54	70	3.0	N9202-150
1"	25	33.4	Class 150 RF	27	64	80	3.0	N9203-150
1-1/4"	32	42.2	Class 150 RF	42	73	90	6.4	N9204-150
1-1/2"	40	48.3	Class 150 RF	48	83	100	6.4	N9205-150
2"	50	60.3	Class 150 RF	61	102	120	6.4	N9206-150
2-1/2"	65	73.0 / 76.1	Class 150 RF	73	121	140.0	6.4	N9207-150
3"	80	88.9	Class 150 RF	89	133	150	6.4	N9208-150
4"	100	114.3	Class 150 RF	114	171	190	9.7	N9209-150
5"	125	139.7	Class 150 RF	141	194	215	9.7	N9210-150
6"	150	165.1 / 168.3	Class 150 RF	168	219	240	12.7	N9211-150
8"	200	219.1	Class 150 RF	219	276	300	12.7	N9212-150
10"	250	273.0	Class 150 RF	273	337	360.0	15.7	N9213-150
12"	300	323.8	Class 150 RF	324	406	430	19.1	N9214-150
14"	350	355.6	Class 150 RF	356	448	475	19.1	N9215-150
16"	400	406.4	Class 150 RF	406	511	540	22.4	N9216-150
18"	450	457	Class 150 RF	457	546	580	25.4	N9217-150
20"	500	508	Class 150 RF	508	603	635	28.4	N9218-150
24"	600	610	Class 150 RF	610	714	750	31.8	N9219-150

## Spectacle blind flange (Figure-8 blank)

### Available size (Class 300 RF)

Size			Rating class	Inside diameter B (mm)	Outside diameter O (mm)	Centerline A (mm)	Thickness t (mm)	Ref. No.
NPS	DN	OD (mm)						
1/2"	15	21.3	Class 300 RF	16	51	65	6.4	N9201-300
3/4"	20	26.7	Class 300 RF	21	64	80	6.4	N9202-300
1"	25	33.4	Class 300 RF	27	70	90	6.4	N9203-300
1-1/4"	32	42.2	Class 300 RF	42	79	100	6.4	N9204-300
1-1/2"	40	48.3	Class 300 RF	48	92	115	6.4	N9205-300
2"	50	60.3	Class 300 RF	61	108	125	9.7	N9206-300
2-1/2"	65	73.0 / 76.1	Class 300 RF	73	127	150	9.7	N9207-300
3"	80	88.9	Class 300 RF	89	146	170	9.7	N9208-300
4"	100	114.3	Class 300 RF	114	178	200	12.7	N9209-300
5"	125	139.7	Class 300 RF	141	213	235	15.7	N9210-300
6"	150	165.1 / 168.3	Class 300 RF	168	248	270	15.7	N9211-300
8"	200	219.1	Class 300 RF	219	305	330	22.4	N9212-300
10"	250	273.0	Class 300 RF	273	359	385	25.4	N9213-300
12"	300	323.8	Class 300 RF	324	419	450	28.4	N9214-300
14"	350	355.6	Class 300 RF	356	483	515	31.8	N9215-300
16"	400	406.4	Class 300 RF	406	536	570	38.1	N9216-300
18"	450	457	Class 300 RF	457	594	630	41.1	N9217-300
20"	500	508	Class 300 RF	508	651	685	44.5	N9218-300
24"	600	610	Class 300 RF	610	772	810	50.8	N9219-300