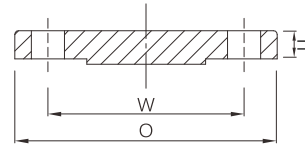


Blind flange



- Certificate: ISO
- Standard: ASME B16.5, GB/T 9124.2
- Material: Forged carbon steel ASTM A105
Forged SS ASTM A182, F304 / F316L
- Flange facing: FF / RF
- Rated pressure: Class 150 / 300, etc.
- Surface: Oiled / hot dip galvanized
Pickling white, etc.



Available size (Class 150)

Size			Rating class	Flange OD O (mm)	Bolt circle dia. W (mm)	Bolting (No. x hole)	Ref. weight (kg)	Ref. No.
NPS	DN	OD (mm)						
1/2"	15	21.3	Class 150	90	60.3	4 x 5/8"	0.43	N9101-150
3/4"	20	26.7	Class 150	100	69.9	4 x 5/8"	0.64	N9102-150
1"	25	33.4	Class 150	110	79.4	4 x 5/8"	0.90	N9103-150
1-1/4"	32	42.2	Class 150	115	88.9	4 x 5/8"	1.13	N9104-150
1-1/2"	40	48.3	Class 150	125	98.4	4 x 5/8"	1.50	N9105-150
2"	50	60.3	Class 150	150	120.7	4 x 3/4"	2.38	N9106-150
2-1/2"	65	73.0 / 76.1	Class 150	180	139.7	4 x 3/4"	4.09	N9107-150
3"	80	88.9	Class 150	190	152.4	4 x 3/4"	4.96	N9108-150
4"	100	114.3	Class 150	230	190.5	8 x 3/4"	7.18	N9109-150
5"	125	139.7	Class 150	255	215.9	8 x 7/8"	8.83	N9110-150
6"	150	165.1 / 168.3	Class 150	280	241.3	8 x 7/8"	11.6	N9111-150
8"	200	219.1	Class 150	345	298.5	8 x 7/8"	20.1	N9112-150
10"	250	273.0	Class 150	405	362.0	12 x 1"	28.8	N9113-150
12"	300	323.8	Class 150	485	431.8	12 x 1"	44.1	N9114-150
14"	350	355.6	Class 150	535	476.3	12 x 1-1/8"	59.0	N9115-150
16"	400	406.4	Class 150	595	539.8	16 x 1-1/8"	76.2	N9116-150
18"	450	457	Class 150	635	577.9	16 x 1-1/4"	94.4	N9117-150
20"	500	508	Class 150	700	635.0	20 x 1-1/4"	123.8	N9118-150
24"	600	610	Class 150	815	749.3	20 x 1-3/8"	187.7	N9119-150

Blind flange

Available size (Class 300)

Size			Rating class	Flange OD O (mm)	Bolt circle dia. W (mm)	Bolting (No. x hole)	Ref. weight (kg)	Ref. No.
NPS	DN	OD (mm)						
1/2"	15	21.3	Class 300	95	66.7	4 x 5/8"	0.64	N9101-300
3/4"	20	26.7	Class 300	115	82.6	4 x 3/4"	1.06	N9102-300
1"	25	33.4	Class 300	125	88.9	4 x 3/4"	1.42	N9103-300
1-1/4"	32	42.2	Class 300	135	98.4	4 x 3/4"	1.86	N9104-300
1-1/2"	40	48.3	Class 300	155	114.3	4 x 7/8"	2.67	N9105-300
2"	50	60.3	Class 300	165	127.0	8 x 3/4"	3.21	N9106-300
2-1/2"	65	73.0 / 76.1	Class 300	190	149.2	8 x 7/8"	4.88	N9107-300
3"	80	88.9	Class 300	210	168.3	8 x 7/8"	6.90	N9108-300
4"	100	114.3	Class 300	255	200.0	8 x 7/8"	11.7	N9109-300
5"	125	139.7	Class 300	280	235.0	8 x 7/8"	15.8	N9110-300
6"	150	165.1 / 168.3	Class 300	320	269.9	12 x 7/8"	21.4	N9111-300
8"	200	219.1	Class 300	380	330.2	12 x 1"	34.3	N9112-300
10"	250	273.0	Class 300	445	387.4	16 x 1-1/8"	53.8	N9113-300
12"	300	323.8	Class 300	520	450.8	16 x 1-1/4"	79.0	N9114-300
14"	350	355.6	Class 300	585	514.4	20 x 1-1/4"	106.1	N9115-300
16"	400	406.4	Class 300	650	571.5	20 x 1-3/8"	139.2	N9116-300
18"	450	457	Class 300	710	628.6	24 x 1-3/8"	175.6	N9117-300
20"	500	508	Class 300	775	685.8	24 x 1-3/8"	222.6	N9118-300
24"	600	610	Class 300	915	812.8	24 x 1-5/8"	340.6	N9119-300