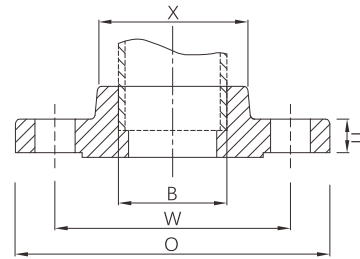


## Socket weld flange (SW flange)



- Certificate: ISO
- Standard: ASME B16.5, GB/T 9124.2
- Material: Forged carbon steel ASTM A105  
Forged SS ASTM A182, F304 / F316L
- Flange facing: FF / RF
- Rated pressure: Class 150 / 300, etc.
- Surface: Oiled / hot dip galvanized  
Pickling white, etc.



### Available size (Class 150)

Size			Rating class	Flange OD O (mm)	Bolt circle dia. W (mm)	Bolting (No. x hole)	Ref. weight (kg)	Ref. No.
NPS	DN	OD (mm)						
1/2"	15	21.3	Class 150	90	60.3	4 x 5/8"	0.42	N8801-150
3/4"	20	26.7	Class 150	100	69.9	4 x 5/8"	0.60	N8802-150
1"	25	33.4	Class 150	110	79.4	4 x 5/8"	0.83	N8803-150
1-1/4"	32	42.2	Class 150	115	88.9	4 x 5/8"	1.02	N8804-150
1-1/2"	40	48.3	Class 150	125	98.4	4 x 5/8"	1.32	N8805-150
2"	50	73.0 / 76.1	Class 150	150	120.7	4 x 3/4"	2.07	N8806-150
2-1/2"	65	73.0	Class 150	180	139.7	4 x 3/4"	3.52	N8807-150
3"	80	88.9	Class 150	190	152.4	4 x 3/4"	4.02	N8808-150

### Available size (Class 300)

Size			Rating class	Flange OD O (mm)	Bolt circle dia. W (mm)	Bolting (No. x hole)	Ref. weight (kg)	Ref. No.
NPS	DN	OD (mm)						
1/2"	15	21.3	Class 300	95	66.7	4 x 5/8"	0.67	N8801-300
3/4"	20	26.7	Class 300	115	82.6	4 x 3/4"	1.11	N8802-300
1"	25	33.4	Class 300	125	88.9	4 x 3/4"	1.43	N8803-300
1-1/4"	32	42.2	Class 300	135	98.4	4 x 3/4"	1.80	N8804-300
1-1/2"	40	48.3	Class 300	155	114.3	4 x 7/8"	2.58	N8805-300
2"	50	60.3	Class 300	165	127.0	8 x 3/4"	3.02	N8806-300
2-1/2"	65	73.0 / 76.1	Class 300	190	149.2	8 x 7/8"	4.57	N8807-300
3"	80	88.9	Class 300	210	168.3	8 x 7/8"	6.20	N8808-300