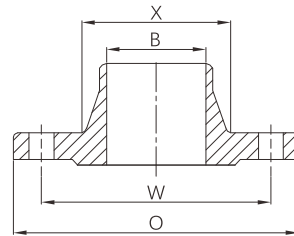


Welding neck flange (WN flange)



- Certificate: ISO
- Standard: ASME B16.5, GB/T 9124.2
- Material: Forged carbon steel ASTM A105
Forged SS ASTM A182, F304 / F316L
- Flange facing: FF / RF
- Rated pressure: Class 150 / 300, etc.
- Surface: Oiled / hot dip galvanized
Pickling white, etc.



Available size (Class 150)

Size			Rating class	Flange OD O (mm)	Bolt circle dia. W (mm)	Bolting (No. x hole)	Ref. weight (kg)	Ref. No.
NPS	DN	OD (mm)						
1/2"	15	21.3	Class 150	90	60.3	4 x 5/8"	0.50	N8601-150
3/4"	20	26.7	Class 150	100	69.9	4 x 5/8"	0.74	N8602-150
1"	25	33.4	Class 150	110	79.4	4 x 5/8"	1.06	N8603-150
1-1/4"	32	42.2	Class 150	115	88.9	4 x 5/8"	1.31	N8604-150
1-1/2"	40	48.3	Class 150	125	98.4	4 x 5/8"	1.69	N8605-150
2"	50	60.3	Class 150	150	120.7	4 x 3/4"	2.55	N8606-150
2-1/2"	65	73.0 / 76.1	Class 150	180	139.7	4 x 3/4"	4.26	N8607-150
3"	80	88.9	Class 150	190	152.4	4 x 3/4"	4.98	N8608-150
4"	100	114.3	Class 150	230	190.5	8 x 3/4"	7.13	N8609-150
5"	125	139.7	Class 150	255	215.9	8 x 7/8"	8.93	N8610-150
6"	150	165.1 / 168.3	Class 150	280	241.3	8 x 7/8"	10.8	N8611-150
8"	200	219.1	Class 150	345	298.5	8 x 7/8"	18.1	N8612-150
10"	250	273.0	Class 150	405	362.0	12 x 1"	24.1	N8613-150
12"	300	323.8	Class 150	485	431.8	12 x 1"	37.7	N8614-150
14"	350	355.6	Class 150	535	476.3	12 x 1-1/8"	49.7	N8615-150
16"	400	406.4	Class 150	595	539.8	16 x 1-1/8"	60.6	N8616-150
18"	450	457	Class 150	635	577.9	16 x 1-1/4"	69.5	N8617-150
20"	500	508	Class 150	700	635.0	20 x 1-1/4"	86.6	N8618-150
24"	600	610	Class 150	815	749.3	20 x 1-3/8"	118.4	N8619-150

Welding neck flange (WN flange)

Available size (Class 300)

Size			Rating class	Flange OD O (mm)	Bolt circle dia. W (mm)	Bolting (No. x hole)	Ref. weight (kg)	Ref. No.
NPS	DN	OD (mm)						
1/2"	15	21.3	Class 300	95	66.7	4 x 5/8"	0.75	N8601-300
3/4"	20	26.7	Class 300	115	82.6	4 x 3/4"	1.24	N8602-300
1"	25	33.4	Class 300	125	88.9	4 x 3/4"	1.64	N8603-300
1-1/4"	32	42.2	Class 300	135	98.4	4 x 3/4"	2.13	N8604-300
1-1/2"	40	48.3	Class 300	155	114.3	4 x 7/8"	2.94	N8605-300
2"	50	60.3	Class 300	165	127.0	8 x 3/4"	3.47	N8606-300
2-1/2"	65	73.0 / 76.1	Class 300	190	149.2	8 x 7/8"	5.28	N8607-300
3"	80	88.9	Class 300	210	168.3	8 x 7/8"	7.11	N8608-300
4"	100	114.3	Class 300	255	200.0	8 x 7/8"	11.6	N8609-300
5"	125	139.7	Class 300	280	235.0	8 x 7/8"	15.5	N8610-300
6"	150	165.1 / 168.3	Class 300	320	269.9	12 x 7/8"	19.9	N8611-300
8"	200	219.1	Class 300	380	330.2	12 x 1"	30.1	N8612-300
10"	250	273.0	Class 300	445	387.4	16 x 1-1/8"	43.6	N8613-300
12"	300	323.8	Class 300	520	450.8	16 x 1-1/4"	62.7	N8614-300
14"	350	355.6	Class 300	585	514.4	20 x 1-1/4"	87.7	N8615-300
16"	400	406.4	Class 300	650	571.5	20 x 1-3/8"	109.8	N8616-300
18"	450	457	Class 300	710	628.6	24 x 1-3/8"	133.4	N8617-300
20"	500	508	Class 300	775	685.8	24 x 1-3/8"	162.2	N8618-300
24"	600	610	Class 300	915	812.8	24 x 1-5/8"	235.4	N8619-300