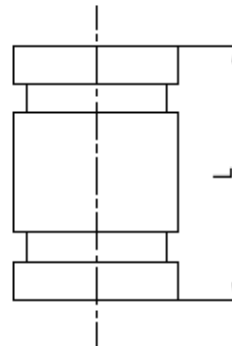


## Grooved x grooved adapter (Pipe nipple)



- Certificate: ISO
- Standard: Refer to UL Subject 213B, NFPA 13
- Material: ASTM A234, equal to carbon steel pipe  
ASTM A106
- Connection: Grooved x grooved
- Rated pressure: 300 psi
- Surface: Black painting / hot dip galvanized, etc.



### Available size

Size			Thickness (mm)			Connection	L (mm)	Ref. No.
NPS	DN	OD (mm)	Sch10	Sch40	Sch80			
1"	25	33.4	2.77	3.38	4.55	GRV x GRV	75 / 100 / 150, etc.	N8201
1-1/4"	32	42.2	2.77	3.56	4.85	GRV x GRV	75 / 100 / 150, etc.	N8202
1-1/2"	40	48.3	2.77	3.68	5.08	GRV x GRV	75 / 100 / 150, etc.	N8203
2"	50	60.3	2.77	3.91	5.54	GRV x GRV	75 / 100 / 150, etc.	N8204
2-1/2"	65	73.0 / 76.1	3.05	5.16	7.01	GRV x GRV	75 / 100 / 150, etc.	N8205
3"	80	88.9	3.05	5.49	7.62	GRV x GRV	75 / 100 / 150, etc.	N8206
4"	100	114.3	3.05	6.02	8.56	GRV x GRV	75 / 100 / 150, etc.	N8207
5"	125	141.3 / 139.7	3.40	6.55	9.53	GRV x GRV	75 / 100 / 150, etc.	N8208
6"	150	168.3 / 165.1	3.40	7.11	10.97	GRV x GRV	75 / 100 / 150, etc.	N8209
8"	200	219.1	3.76	8.18	12.70	GRV x GRV	75 / 100 / 150, etc.	N8210