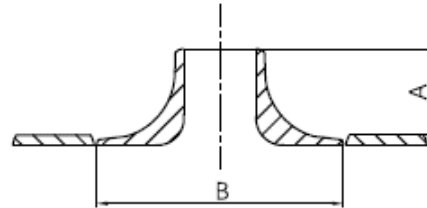


Sweep outlet



- Certificate: ISO
- Standard: Refer to MSS SP-97, GB/T 19326
- Material: Carbon steel ASTM A234, WPB
SS ASTM A403, WP304 / WP316L
- Connection: Butt weld
- W. pressure: Equal to same seamless pipe
- Surface: Oiled / hot dip galvanized
Pickling white, etc.



Available size

Branch outlet size			Run pipe		Length	Connection	Ref. No.
NPS	DN	OD (mm)	NPS	DN	A (mm)		
1-1/4"	32	42.2	6" ~ 36"	150 ~ 900	32	BW	N7804
1-1/2"	40	48.3	6" ~ 36"	150 ~ 900	44	BW	N7805
2"	50	60.3	6" ~ 36"	150 ~ 900	38	BW	N7806
2-1/2"	65	73.0	6" ~ 36"	150 ~ 900	41	BW	N7807
3"	80	88.9	6" ~ 36"	150 ~ 900	42	BW	N7808
4"	100	114.3	6" ~ 36"	150 ~ 900	52	BW	N7809
5"	125	141.3	10" ~ 36"	250 ~ 900	61	BW	N7810
6"	150	168.3	10" ~ 36"	250 ~ 900	68	BW	N7811
8"	200	219.1	12" ~ 36"	300 ~ 900	76	BW	N7812
10"	250	273.0	16" ~ 36"	400 ~ 900	79	BW	N7813
12"	300	323.8	16" ~ 36"	400 ~ 900	84	BW	N7814
14"	350	355.6	20" ~ 36"	500 ~ 900	92	BW	N7815
16"	400	406.4	24" ~ 36"	600 ~ 900	95	BW	N7816
18"	450	457	24" ~ 36"	600 ~ 900	117	BW	N7817
20"	500	508	24" ~ 36"	600 ~ 900	130	BW	N7818
24"	600	610	30" ~ 36"	750 ~ 900	143	BW	N7819