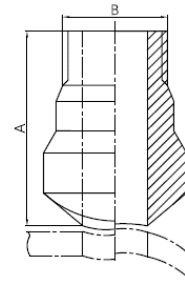


# Nipple outlet



- Certificate: ISO
- Standard: Refer to MSS SP-97, GB/T 19326
- Material: Carbon steel ASTM A234, WPB  
SS ASTM A403, WP304 / WP316L
- Connection: Socket weld, threaded, butt weld
- W. pressure: Equal to same seamless pipe
- Surface: Oiled / hot dip galvanized  
Pickling white, etc.



## Available size

Branch outlet size			Length A (mm)		Connection	Ref. No.
NPS	DN	OD (mm)	STD, XS	Sch160, XXS		
1/2"	15	21.3	100	100	SW, THD, BW	N7701
3/4"	20	26.7	100	100	SW, THD, BW	N7702
1"	25	33.4	100	100	SW, THD, BW	N7703
1-1/4"	32	42.2	110	120	SW, THD, BW	N7704
1-1/2"	40	48.3	110	120	SW, THD, BW	N7705
2"	50	60.3	110	120	SW, THD, BW	N7706
2-1/2"	65	73.0	120	140	SW, THD, BW	N7707
3"	80	88.9	130	150	SW, THD, BW	N7708
4"	100	114.3	140	160	SW, THD, BW	N7709