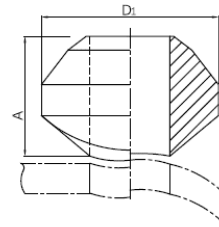


## Butt weld 90° branch outlet (Weldolet)



- Certificate: ISO
- Standard: MSS SP-97, GB/T 19326
- Material: Carbon steel ASTM A234, WPB  
SS ASTM A403, WP304 / WP316L
- Thickness: STD, XS, Sch160, XXS, etc.
- W. pressure: Equal to same seamless pipe
- Surface: Oiled / hot dip galvanized  
Pickling white, etc.



### Available size with STD x STD (Sch40 x Sch40)

Branch outlet size			Run pipe		Length	Diameter	Ref. No.
NPS	DN	OD (mm)	NPS	DN	A (mm)	D1 (mm)	
1/2"	15	21.3	3/4" ~ 36"	20 ~ 900	19	34	N7401-STD
3/4"	20	26.7	1" ~ 36"	25 ~ 900	22	38	N7402-STD
1"	25	33.4	1-1/4" ~ 36"	32 ~ 900	27	46	N7403-STD
1-1/4"	32	42.2	1-1/2" ~ 36"	40 ~ 900	32	56	N7404-STD
1-1/2"	40	48.3	2" ~ 36"	50 ~ 900	33	63	N7405-STD
2"	50	60.3	2-1/2" ~ 36"	65 ~ 900	38	75	N7406-STD
2-1/2"	65	73.0	3" ~ 36"	80 ~ 900	41	87	N7407-STD
3"	80	88.9	4" ~ 36"	100 ~ 900	44	105	N7408-STD
4"	100	114.3	5" ~ 36"	125 ~ 900	51	133	N7409-STD
5"	125	141.3	6" ~ 36"	150 ~ 900	57	164	N7410-STD
6"	150	168.3	8" ~ 36"	200 ~ 900	60	196	N7411-STD
8"	200	219.1	10" ~ 36"	250 ~ 900	70	252	N7412-STD
10"	250	273.0	12" ~ 36"	300 ~ 900	78	310	N7413-STD
12"	300	323.8	14" ~ 36"	350 ~ 900	86	365	N7414-STD
14"	350	355.6	16" ~ 36"	400 ~ 900	89	399	N7415-STD
16"	400	406.4	18" ~ 36"	450 ~ 900	94	454	N7416-STD
18"	450	457	20" ~ 36"	500 ~ 900	97	509	N7417-STD
20"	500	508	22" ~ 36"	550 ~ 900	102	563	N7418-STD
24"	600	610	26" ~ 36"	650 ~ 900	116	669	N7419-STD

## Butt weld 90° branch outlet (Weldolet)

### Available size with XS x XS (Sch80 x Sch80)

Branch outlet size			Run pipe		Length	Diameter	Ref. No.
NPS	DN	OD (mm)	NPS	DN	A (mm)	D1 (mm)	
1/2"	15	21.3	3/4" ~ 48"	20 ~ 1200	19	34	N7401-XS
3/4"	20	26.7	1" ~ 48"	25 ~ 1200	22	38	N7402-XS
1"	25	33.4	1-1/4" ~ 48"	32 ~ 1200	27	46	N7403-XS
1-1/4"	32	42.2	1-1/2" ~ 48"	40 ~ 1200	32	56	N7404-XS
1-1/2"	40	48.3	2" ~ 48"	50 ~ 1200	33	63	N7405-XS
2"	50	60.3	2-1/2" ~ 48"	65 ~ 1200	38	78	N7406-XS
2-1/2"	65	73.0	3" ~ 48"	80 ~ 1200	41	90	N7407-XS
3"	80	88.9	4" ~ 48"	100 ~ 1200	44	111	N7408-XS
4"	100	114.3	5" ~ 48"	125 ~ 1200	51	141	N7409-XS
5"	125	141.3	6" ~ 48"	150 ~ 1200	57	173	N7410-XS
6"	150	168.3	8" ~ 48"	200 ~ 1200	78	196	N7411-XS
8"	200	219.1	10" ~ 48"	250 ~ 1200	90	249	N7412-XS
10"	250	273.0	12" ~ 48"	300 ~ 1200	94	311	N7413-XS
12"	300	323.8	14" ~ 48"	350 ~ 1200	96	371	N7414-XS
14"	350	355.6	16" ~ 48"	400 ~ 1200	100	405	N7415-XS
16"	400	406.4	18" ~ 48"	450 ~ 1200	106	461	N7416-XS
18"	450	457	20" ~ 48"	500 ~ 1200	111	516	N7417-XS
20"	500	508	22" ~ 48"	550 ~ 1200	119	570	N7418-XS
24"	600	610	26" ~ 48"	650 ~ 1200	140	675	N7419-XS

### Available size with Sch160 x Sch160

Branch outlet size			Run pipe		Length	Diameter	Ref. No.
NPS	DN	OD (mm)	NPS	DN	A (mm)	D1 (mm)	
1/2"	15	21.3	3/4" ~ 12"	20 ~ 300	28	38	N7401-160
3/4"	20	26.7	1" ~ 12"	25 ~ 300	32	46	N7402-160
1"	25	33.4	1-1/4" ~ 12"	32 ~ 300	38	56	N7403-160
1-1/4"	32	42.2	1-1/2" ~ 12"	40 ~ 300	44	70	N7404-160
1-1/2"	40	48.3	2" ~ 12"	50 ~ 300	51	77	N7405-160
2"	50	60.3	2-1/2" ~ 12"	65 ~ 300	55	91	N7406-160
2-1/2"	65	73.0	3" ~ 12"	80 ~ 300	62	108	N7407-160
3"	80	88.9	4" ~ 12"	100 ~ 300	73	127	N7408-160

## Butt weld 90° branch outlet (Weldolet)

### Available size with Sch160 x Sch160

Branch outlet size			Run pipe		Length	Diameter	Ref. No.
NPS	DN	OD (mm)	NPS	DN	A (mm)	D1 (mm)	
4"	100	114.3	5" ~ 12"	125 ~ 300	84	156	N7409-160
5"	125	141.3	6" ~ 12"	150 ~ 300	94	187	N7410-160
6"	150	168.3	8" ~ 12"	200 ~ 300	105	218	N7411-160

### Available size with XXS x XXS

Branch outlet size			Run pipe		Length	Diameter	Ref. No.
NPS	DN	OD (mm)	NPS	DN	A (mm)	D1 (mm)	
1/2"	15	21.3	3/4" ~ 12"	20 ~ 300	28	38	N7401-XXS
3/4"	20	26.7	1" ~ 12"	25 ~ 300	32	46	N7402-XXS
1"	25	33.4	1-1/4" ~ 12"	32 ~ 300	38	56	N7403-XXS
1-1/4"	32	42.2	1-1/2" ~ 12"	40 ~ 300	44	70	N7404-XXS
1-1/2"	40	48.3	2" ~ 12"	50 ~ 300	51	77	N7405-XXS
2"	50	60.3	2-1/2" ~ 12"	65 ~ 300	55	79	N7406-XXS
2-1/2"	65	73.0	3" ~ 12"	80 ~ 300	62	90	N7407-XXS
3"	80	88.9	4" ~ 12"	100 ~ 300	73	110	N7408-XXS
4"	100	114.3	5" ~ 12"	125 ~ 300	84	141	N7409-XXS
5"	125	141.3	6" ~ 12"	150 ~ 300	94	173	N7410-XXS
6"	150	168.3	8" ~ 12"	200 ~ 300	105	198	N7411-XXS