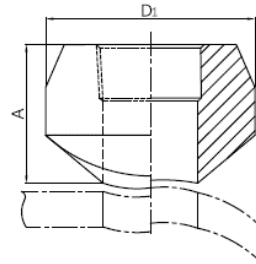


Threaded 90° branch outlet (Threadolet)



- Certificate: ISO
- Standard: MSS SP-97, GB/T 19326
- Material: Carbon steel ASTM A234, WPB
SS ASTM A403, WP304 / WP316L
- Thread: NPT / BSPT
- W. pressure: Class 3000 / 6000 / 9000
- Surface: Oiled / hot dip galvanized
Pickling white, etc.



Available size for class 3000

Branch outlet size			Run pipe		Length	Diameter	Ref. No.
NPS	DN	OD (mm)	NPS	DN	A (mm)	D1 (mm)	
1/2"	15	21.3	3/4" ~ 48"	20 ~ 1200	25	34	N7301-3000
3/4"	20	26.7	1" ~ 48"	25 ~ 1200	27	40	N7302-3000
1"	25	33.4	1-1/4" ~ 48"	32 ~ 1200	33	48	N7303-3000
1-1/4"	32	42.2	1-1/2" ~ 48"	40 ~ 1200	33	58	N7304-3000
1-1/2"	40	48.3	2" ~ 48"	50 ~ 1200	35	65	N7305-3000
2"	50	60.3	2-1/2" ~ 48"	65 ~ 1200	38	78	N7306-3000
2-1/2"	65	73.0	3" ~ 48"	80 ~ 1200	46	94	N7307-3000
3"	80	88.9	4" ~ 48"	100 ~ 1200	51	112	N7308-3000
4"	100	114.3	5" ~ 48"	125 ~ 1200	57	141	N7309-3000

Threaded 90° branch outlet (Threadolet)

Available size for class 6000

Branch outlet size			Run pipe		Length	Diameter	Ref. No.
NPS	DN	OD (mm)	NPS	DN	A (mm)	D1 (mm)	
1/2"	15	21.3	3/4" ~ 12"	20 ~ 300	32	38	N7301-6000
3/4"	20	26.7	1" ~ 12"	25 ~ 300	37	46	N7302-6000
1"	25	33.4	1-1/4" ~ 12"	32 ~ 300	40	56	N7303-6000
1-1/4"	32	42.2	1-1/2" ~ 12"	40 ~ 300	41	70	N7304-6000
1-1/2"	40	48.3	2" ~ 12"	50 ~ 300	43	77	N7305-6000
2"	50	60.3	2-1/2" ~ 12"	65 ~ 300	52	91	N7306-6000

Available size for class 9000

Branch outlet size			Run pipe		Length	Diameter	Ref. No.
NPS	DN	OD (mm)	NPS	DN	A (mm)	D1 (mm)	
1/2"	15	21.3	3/4" ~ 12"	20 ~ 300	32	44	N7301-9000
3/4"	20	26.7	1" ~ 12"	25 ~ 300	37	50	N7302-9000
1"	25	33.4	1-1/4" ~ 12"	32 ~ 300	40	60	N7303-9000
1-1/4"	32	42.2	1-1/2" ~ 12"	40 ~ 300	41	70	N7304-9000
1-1/2"	40	48.3	2" ~ 12"	50 ~ 300	43	78	N7305-9000
2"	50	60.3	2-1/2" ~ 12"	65 ~ 300	52	94	N7306-9000