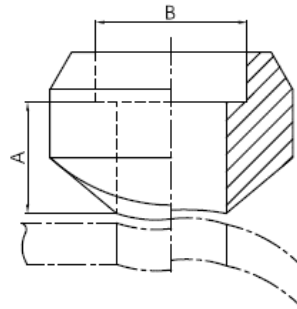


Socket weld 90° branch outlet (Sockolet)



- Certificate: ISO
- Standard: MSS SP-97, GB/T 19326
- Material: Carbon steel ASTM A234, WPB
SS ASTM A403, WP304 / WP316L
- W. pressure: Class 3000 / 6000 / 9000
- Surface: Oiled / hot dip galvanized
Pickling white, etc.



Available size for class 3000

Branch outlet size			Run pipe		Length	Socket bore dia.	Ref. No.
NPS	DN	OD (mm)	NPS	DN	A (mm)	B (mm)	
1/2"	15	21.3	3/4" ~ 48"	20 ~ 1200	16	22	N7201-3000
3/4"	20	26.7	1" ~ 48"	25 ~ 1200	16	28	N7202-3000
1"	25	33.4	1-1/4" ~ 48"	32 ~ 1200	23	34	N7203-3000
1-1/4"	32	42.2	1-1/2" ~ 48"	40 ~ 1200	23	43	N7204-3000
1-1/2"	40	48.3	2" ~ 48"	50 ~ 1200	24	49	N7205-3000
2"	50	60.3	2-1/2" ~ 48"	65 ~ 1200	24	61	N7206-3000
2-1/2"	65	73.0	3" ~ 48"	80 ~ 1200	26	74	N7207-3000
3"	80	88.9	4" ~ 48"	100 ~ 1200	31	90	N7208-3000
4"	100	114.3	5" ~ 48"	125 ~ 1200	31	116	N7209-3000

Socket weld 90° branch outlet (Sokolet)

Available size for class 6000

Branch outlet size			Run pipe		Length	Socket bore dia.	Ref. No.
NPS	DN	OD (mm)	NPS	DN	A (mm)	B (mm)	
1/2"	15	21.3	3/4" ~ 12"	20 ~ 300	24	22	N7201-6000
3/4"	20	26.7	1" ~ 12"	25 ~ 300	26	28	N7202-6000
1"	25	33.4	1-1/4" ~ 12"	32 ~ 300	29	34	N7203-6000
1-1/4"	32	42.2	1-1/2" ~ 12"	40 ~ 300	31	43	N7204-6000
1-1/2"	40	48.3	2" ~ 12"	50 ~ 300	32	49	N7205-6000
2"	50	60.3	2-1/2" ~ 12"	65 ~ 300	37	61	N7206-6000

Available size for class 9000

Branch outlet size			Run pipe		Length	Socket bore dia.	Ref. No.
NPS	DN	OD (mm)	NPS	DN	A (mm)	B (mm)	
1/2"	15	21.3	3/4" ~ 12"	20 ~ 300	24	22	N7201-9000
3/4"	20	26.7	1" ~ 12"	25 ~ 300	26	28	N7202-9000
1"	25	33.4	1-1/4" ~ 12"	32 ~ 300	29	34	N7203-9000
1-1/4"	32	42.2	1-1/2" ~ 12"	40 ~ 300	31	43	N7204-9000
1-1/2"	40	48.3	2" ~ 12"	50 ~ 300	32	49	N7205-9000
2"	50	60.3	2-1/2" ~ 12"	65 ~ 300	37	61	N7206-9000