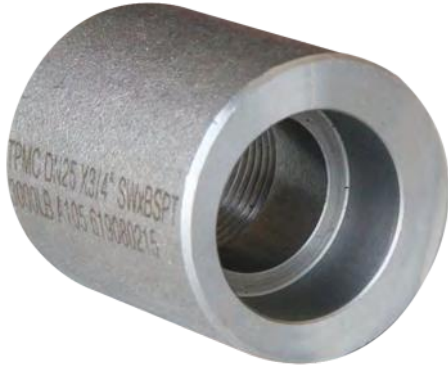
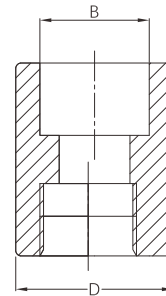


Socket weld x threaded eccentric reducer



- Certificate: ISO
- Standard: Refer to ASME B16.11
- Material: Forged carbon steel ASTM A105
Forged SS ASTM A182, F304 / F316L
- Thread: NPT / BSPT
- W. pressure: Class 6000 / 9000 (Class 3000 / 6000)
- Surface: Oiled / hot dip galvanized
Pickling white, etc.



Available size

Size		Socket bore dia. B (mm)	Outside dia. D (mm)		Ref. No.
NPS	DN		OD (mm)		
3/4" x 1/2"	20 x 15	26.7 x 21.3	27.2 ~ 27.6	Class 3000: 35 Class 6000: 44	N4901
1" x 3/4"	25 x 20	33.4 x 26.7	33.9 ~ 34.3	Class 3000: 44 Class 6000: 57	N4902
1" x 1/2"	25 x 15	33.4 x 21.3	33.9 ~ 34.3	Class 3000: 44 Class 6000: 57	N4903
1-1/4" x 1"	32 x 25	42.2 x 33.4	42.7 ~ 43.1	Class 3000: 57 Class 6000: 64	N4904
1-1/4" x 3/4"	32 x 20	42.2 x 26.7	42.7 ~ 43.1	Class 3000: 57 Class 6000: 64	N4905
1-1/4" x 1/2"	32 x 15	42.2 x 21.3	42.7 ~ 43.1	Class 3000: 57 Class 6000: 64	N4906
1-1/2" x 1-1/4"	40 x 32	48.3 x 42.2	48.8 ~ 49.2	Class 3000: 64 Class 6000: 76	N4907
1-1/2" x 1"	40 x 25	48.3 x 33.4	48.8 ~ 49.2	Class 3000: 64 Class 6000: 76	N4908
1-1/2" x 3/4"	40 x 20	48.3 x 26.7	48.8 ~ 49.2	Class 3000: 64 Class 6000: 76	N4909
1-1/2" x 1/2"	40 x 15	48.3 x 21.3	48.8 ~ 49.2	Class 3000: 64 Class 6000: 76	N4910
2" x 1-1/2"	50 x 40	60.3 x 48.3	61.2 ~ 61.7	Class 3000: 76 Class 6000: 92	N4911
2" x 1-1/4"	50 x 32	60.3 x 42.2	61.2 ~ 61.7	Class 3000: 76 Class 6000: 92	N4912
2" x 1"	50 x 25	60.3 x 33.4	61.2 ~ 61.7	Class 3000: 76 Class 6000: 92	N4913
2" x 3/4"	50 x 20	60.3 x 26.7	61.2 ~ 61.7	Class 3000: 76 Class 6000: 92	N4914
2" x 1/2"	50 x 15	60.3 x 21.3	61.2 ~ 61.7	Class 3000: 76 Class 6000: 92	N4915
2-1/2" x 2"	65 x 50	73.0 x 60.3	73.9 ~ 74.4	Class 3000: 92 Class 6000: 108	N4916

Socket weld x threaded eccentric reducer

Available size

Size			Socket bore dia.	Outside dia. D (mm)		Ref. No.
NPS	DN	OD (mm)	B (mm)	Class 3000	Class 6000	
2-1/2" x 1-1/2"	65 x 40	73.0 x 48.3	73.9 ~ 74.4	92	108	N4917
2-1/2" x 1-1/4"	65 x 32	73.0 x 42.2	73.9 ~ 74.4	92	108	N4918
2-1/2" x 1"	65 x 25	73.0 x 33.4	73.9 ~ 74.4	92	108	N4919
2-1/2" x 3/4"	65 x 20	73.0 x 26.7	73.9 ~ 74.4	92	108	N4920
2-1/2" x 1/2"	65 x 15	73.0 x 21.3	73.9 ~ 74.4	92	108	N4921
3" x 2-1/2"	80 x 65	88.9 x 73.0	89.8 ~ 90.3	108	127	N4922
3" x 2"	80 x 50	88.9 x 60.3	89.8 ~ 90.3	108	127	N4923
3" x 1-1/2"	80 x 40	88.9 x 48.3	89.8 ~ 90.3	108	127	N4924
3" x 1-1/4"	80 x 32	88.9 x 42.2	89.8 ~ 90.3	108	127	N4925
3" x 1"	80 x 25	88.9 x 33.4	89.8 ~ 90.3	108	127	N4926
3" x 3/4"	80 x 20	88.9 x 26.7	89.8 ~ 90.3	108	127	N4927
3" x 1/2"	80 x 15	88.9 x 21.3	89.8 ~ 90.3	108	127	N4928
4" x 3"	100 x 80	114.3 x 88.9	115.2 ~ 115.7	140	159	N4929
4" x 2-1/2"	100 x 65	114.3 x 73.0	115.2 ~ 115.7	140	159	N4930
4" x 2"	100 x 50	114.3 x 60.3	115.2 ~ 115.7	140	159	N4931
4" x 1-1/2"	100 x 40	114.3 x 48.3	115.2 ~ 115.7	140	159	N4932
4" x 1-1/4"	100 x 32	114.3 x 42.2	115.2 ~ 115.7	140	159	N4933
4" x 1"	100 x 25	114.3 x 33.4	115.2 ~ 115.7	140	159	N4934
4" x 3/4"	100 x 20	114.3 x 26.7	115.2 ~ 115.7	140	159	N4935
4" x 1/2"	100 x 15	114.3 x 21.3	115.2 ~ 115.7	140	159	N4936