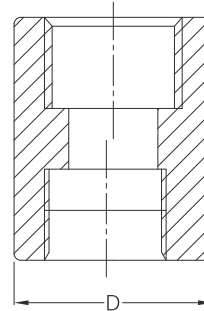


Threaded eccentric reducer



- Certificate: ISO
- Standard: Refer to ASME B16.11
- Material: Forged carbon steel ASTM A105
Forged SS ASTM A182, F304 / F316L
- Thread: NPT / BSPT
- W. pressure: Class 3000 / 6000
- Surface: Oiled / hot dip galvanized
Pickling white, etc.



Available size

NPS	Size		Outside dia. D (mm)		Ref. No.
	DN	OD (mm)	Class 3000	Class 6000	
3/4" x 1/2"	20 x 15	26.7 x 21.3	35	44	N4701
1" x 3/4"	25 x 20	33.4 x 26.7	44	57	N4702
1" x 1/2"	25 x 15	33.4 x 21.3	44	57	N4703
1-1/4" x 1"	32 x 25	42.2 x 33.4	57	64	N4704
1-1/4" x 3/4"	32 x 20	42.2 x 26.7	57	64	N4705
1-1/4" x 1/2"	32 x 15	42.2 x 21.3	57	64	N4706
1-1/2" x 1-1/4"	40 x 32	48.3 x 42.2	64	76	N4707
1-1/2" x 1"	40 x 25	48.3 x 33.4	64	76	N4708
1-1/2" x 3/4"	40 x 20	48.3 x 26.7	64	76	N4709
1-1/2" x 1/2"	40 x 15	48.3 x 21.3	64	76	N4710
2" x 1-1/2"	50 x 40	60.3 x 48.3	76	92	N4711
2" x 1-1/4"	50 x 32	60.3 x 42.2	76	92	N4712
2" x 1"	50 x 25	60.3 x 33.4	76	92	N4713
2" x 3/4"	50 x 20	60.3 x 26.7	76	92	N4714
2" x 1/2"	50 x 15	60.3 x 21.3	76	92	N4715
2-1/2" x 2"	65 x 50	73.0 x 60.3	92	108	N4716

Threaded eccentric reducer

Available size

Size			Outside dia. D (mm)		Ref. No.
NPS	DN	OD (mm)	Class 3000	Class 6000	
2-1/2" x 1-1/2"	65 x 40	73.0 x 48.3	92	108	N4717
2-1/2" x 1-1/4"	65 x 32	73.0 x 42.2	92	108	N4718
2-1/2" x 1"	65 x 25	73.0 x 33.4	92	108	N4719
2-1/2" x 3/4"	65 x 20	73.0 x 26.7	92	108	N4720
2-1/2" x 1/2"	65 x 15	73.0 x 21.3	92	108	N4721
3" x 2-1/2"	80 x 65	88.9 x 73.0	108	127	N4722
3" x 2"	80 x 50	88.9 x 60.3	108	127	N4723
3" x 1-1/2"	80 x 40	88.9 x 48.3	108	127	N4724
3" x 1-1/4"	80 x 32	88.9 x 42.2	108	127	N4725
3" x 1"	80 x 25	88.9 x 33.4	108	127	N4726
3" x 3/4"	80 x 20	88.9 x 26.7	108	127	N4727
3" x 1/2"	80 x 15	88.9 x 21.3	108	127	N4728
4" x 3"	100 x 80	114.3 x 88.9	140	159	N4729
4" x 2-1/2"	100 x 65	114.3 x 73.0	140	159	N4730
4" x 2"	100 x 50	114.3 x 60.3	140	159	N4731
4" x 1-1/2"	100 x 40	114.3 x 48.3	140	159	N4732
4" x 1-1/4"	100 x 32	114.3 x 42.2	140	159	N4733
4" x 1"	100 x 25	114.3 x 33.4	140	159	N4734
4" x 3/4"	100 x 20	114.3 x 26.7	140	159	N4735
4" x 1/2"	100 x 15	114.3 x 21.3	140	159	N4736