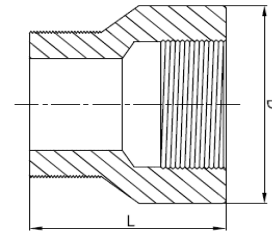


# Threaded female and male concentric reducer



- Certificate: ISO
- Standard: Refer to ASME B16.11
- Material: Forged carbon steel ASTM A105  
Forged SS ASTM A182, F304 / F316L
- Thread: NPT / BSPT
- W. pressure: Class 2000 / 3000 / 6000
- Surface: Oiled / hot dip galvanized  
Pickling white, etc.



## Available size

Size			End to end L (mm)			Ref. No.
NPS	DN	OD (mm)	Class 2000	Class 3000	Class 6000	
3/4" x 1/2"	20 x 15	26.7 x 21.3	47	47	47	N4601
1" x 3/4"	25 x 20	33.4 x 26.7	55	55	55	N4602
1" x 1/2"	25 x 15	33.4 x 21.3	55	55	55	N4603
1-1/4" x 1"	32 x 25	42.2 x 33.4	63	63	63	N4604
1-1/4" x 3/4"	32 x 20	42.2 x 26.7	63	63	63	N4605
1-1/4" x 1/2"	32 x 15	42.2 x 21.3	63	63	63	N4606
1-1/2" x 1-1/4"	40 x 32	48.3 x 42.2	66	66	66	N4607
1-1/2" x 1"	40 x 25	48.3 x 33.4	66	66	66	N4608
1-1/2" x 3/4"	40 x 20	48.3 x 26.7	66	66	66	N4609
1-1/2" x 1/2"	40 x 15	48.3 x 21.3	66	66	66	N4610
2" x 1-1/2"	50 x 40	60.3 x 48.3	76	76	76	N4611
2" x 1-1/4"	50 x 32	60.3 x 42.2	76	76	76	N4612
2" x 1"	50 x 25	60.3 x 33.4	76	76	76	N4613
2" x 3/4"	50 x 20	60.3 x 26.7	76	76	76	N4614
2" x 1/2"	50 x 15	60.3 x 21.3	76	76	76	N4615
2-1/2" x 2"	65 x 50	73.0 x 60.3	90	90	90	N4616

# Threaded female and male concentric reducer

## Available size

Size			End to end L (mm)			Ref. No.
NPS	DN	OD (mm)	Class 2000	Class 3000	Class 6000	
2-1/2" x 1-1/2"	65 x 40	73.0 x 48.3	90	90	90	N4617
2-1/2" x 1-1/4"	65 x 32	73.0 x 42.2	90	90	90	N4618
2-1/2" x 1"	65 x 25	73.0 x 33.4	90	90	90	N4619
2-1/2" x 3/4"	65 x 20	73.0 x 26.7	90	90	90	N4620
2-1/2" x 1/2"	65 x 15	73.0 x 21.3	90	90	90	N4621
3" x 2-1/2"	80 x 65	88.9 x 73.0	110	110	110	N4622
3" x 2"	80 x 50	88.9 x 60.3	110	110	110	N4623
3" x 1-1/2"	80 x 40	88.9 x 48.3	110	110	110	N4624
3" x 1-1/4"	80 x 32	88.9 x 42.2	110	110	110	N4625
3" x 1"	80 x 25	88.9 x 33.4	110	110	110	N4626
3" x 3/4"	80 x 20	88.9 x 26.7	110	110	110	N4627
3" x 1/2"	80 x 15	88.9 x 21.3	110	110	110	N4628
4" x 3"	100 x 80	114.3 x 88.9	120	120	120	N4629
4" x 2-1/2"	100 x 65	114.3 x 73.0	120	120	120	N4630
4" x 2"	100 x 50	114.3 x 60.3	120	120	120	N4631
4" x 1-1/2"	100 x 40	114.3 x 48.3	120	120	120	N4632
4" x 1-1/4"	100 x 32	114.3 x 42.2	120	120	120	N4633
4" x 1"	100 x 25	114.3 x 33.4	120	120	120	N4634
4" x 3/4"	100 x 20	114.3 x 26.7	120	120	120	N4635
4" x 1/2"	100 x 15	114.3 x 21.3	120	120	120	N4636