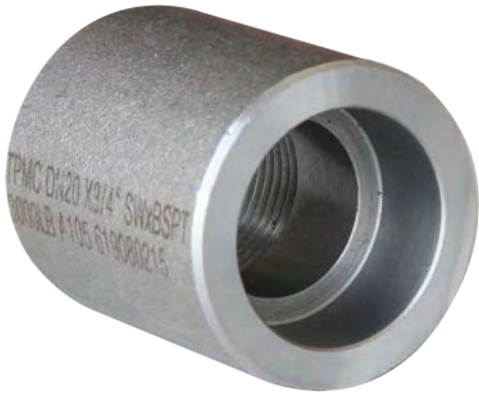
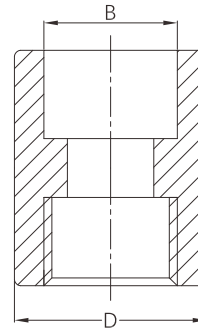


Socket weld x threaded coupling



- Certificate: ISO
- Standard: Refer to ASME B16.11
- Material: Forged carbon steel ASTM A105
Forged SS ASTM A182, F304 / F316L
- Thread: NPT / BSPT
- W. pressure: Class 6000 / 9000 (Class 3000 / 6000)
- Surface: Oiled / hot dip galvanized
Pickling white, etc.



Available size

Size		Socket bore dia. B (mm)	Outside dia. D (mm)		Ref. No.
NPS	DN		OD (mm)		
1/2"	15	21.3	21.8 ~ 22.2	Class 3000: 28 Class 6000: 38	N4401
3/4"	20	26.7	27.2 ~ 27.6	Class 3000: 35 Class 6000: 44	N4402
1"	25	33.4	33.9 ~ 34.3	Class 3000: 44 Class 6000: 57	N4403
1-1/4"	32	42.2	42.7 ~ 43.1	Class 3000: 57 Class 6000: 64	N4404
1-1/2"	40	48.3	48.8 ~ 49.2	Class 3000: 64 Class 6000: 76	N4405
2"	50	60.3	61.2 ~ 61.7	Class 3000: 76 Class 6000: 92	N4406
2-1/2"	65	73.0	73.9 ~ 74.4	Class 3000: 92 Class 6000: 108	N4407
3"	80	88.9	89.8 ~ 90.3	Class 3000: 108 Class 6000: 127	N4408
4"	100	114.3	115.2 ~ 115.7	Class 3000: 140 Class 6000: 159	N4409