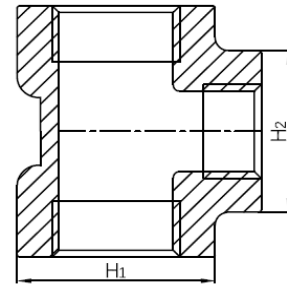


Threaded reducing tee



- Certificate: ISO
- Standard: Refer to ASME B16.11
- Material: Forged carbon steel ASTM A105
Forged SS ASTM A182, F304 / F316L
- Thread: NPT / BSPT
- W. pressure: Class 2000 / 3000 / 6000
- Surface: Oiled / hot dip galvanized
Pickling white, etc.



Available size

Size			Outside dia. of band H1 / H2 (mm)			Ref. No.
NPS	DN	OD (mm)	Class 2000	Class 3000	Class 6000	
3/4" x 1/2"	20 x 15	26.7 x 21.3	38	46	56	N3501
1" x 3/4"	25 x 20	33.4 x 26.7	46	56	62	N3502
1" x 1/2"	25 x 15	33.4 x 21.3	46	56	62	N3503
1-1/4" x 1"	32 x 25	42.2 x 33.4	56	62	75	N3504
1-1/4" x 3/4"	32 x 20	42.2 x 26.7	56	62	75	N3505
1-1/4" x 1/2"	32 x 15	42.2 x 21.3	56	62	75	N3506
1-1/2" x 1-1/4"	40 x 32	48.3 x 42.2	62	75	84	N3507
1-1/2" x 1"	40 x 25	48.3 x 33.4	62	75	84	N3508
1-1/2" x 3/4"	40 x 20	48.3 x 26.7	62	75	84	N3509
1-1/2" x 1/2"	40 x 15	48.3 x 21.3	62	75	84	N3510
2" x 1-1/2"	50 x 40	60.3 x 48.3	75	84	102	N3511
2" x 1-1/4"	50 x 32	60.3 x 42.2	75	84	102	N3512
2" x 1"	50 x 25	60.3 x 33.4	75	84	102	N3513
2" x 3/4"	50 x 20	60.3 x 26.7	75	84	102	N3514
2" x 1/2"	50 x 15	60.3 x 21.3	75	84	102	N3515

Threaded reducing tee

Available size

Size			Outside dia. of band H1 / H2 (mm)			Ref. No.
NPS	DN	OD (mm)	Class 2000	Class 3000	Class 6000	
2-1/2" x 2"	65 x 50	73.0 x 60.3	92	102	121	N3516
2-1/2" x 1-1/2"	65 x 40	73.0 x 48.3	92	102	121	N3517
2-1/2" x 1-1/4"	65 x 32	73.0 x 42.2	92	102	121	N3518
2-1/2" x 1"	65 x 25	73.0 x 33.4	92	102	121	N3519
2-1/2" x 3/4"	65 x 20	73.0 x 26.7	92	102	121	N3520
2-1/2" x 1/2"	65 x 15	73.0 x 21.3	92	102	121	N3521
3" x 2-1/2"	80 x 65	88.9 x 73.0	109	121	146	N3522
3" x 2"	80 x 50	88.9 x 60.3	109	121	146	N3523
3" x 1-1/2"	80 x 40	88.9 x 48.3	109	121	146	N3524
3" x 1-1/4"	80 x 32	88.9 x 42.2	109	121	146	N3525
3" x 1"	80 x 25	88.9 x 33.4	109	121	146	N3526
3" x 3/4"	80 x 20	88.9 x 26.7	109	121	146	N3527
3" x 1/2"	80 x 15	88.9 x 21.3	109	121	146	N3528
4" x 3"	100 x 80	114.3 x 88.9	146	152	152	N3529
4" x 2-1/2"	100 x 65	114.3 x 73.0	146	152	152	N3530
4" x 2"	100 x 50	114.3 x 60.3	146	152	152	N3531
4" x 1-1/2"	100 x 40	114.3 x 48.3	146	152	152	N3532
4" x 1-1/4"	100 x 32	114.3 x 42.2	146	152	152	N3533
4" x 1"	100 x 25	114.3 x 33.4	146	152	152	N3534
4" x 3/4"	100 x 20	114.3 x 26.7	146	152	152	N3535
4" x 1/2"	100 x 15	114.3 x 21.3	146	152	152	N3536