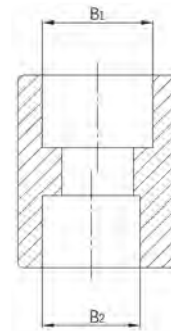


# Socket weld eccentric reducer



- Certificate: ISO
- Standard: Refer to ASME B16.11
- Material: Forged carbon steel ASTM A105  
Forged SS ASTM A182, F304 / F316L
- W. pressure: Class 3000 / 6000 / 9000
- Surface: Oiled / hot dip galvanized  
Pickling white, etc.



## Available size

Size			Socket bore dia. (Class 3000 / 6000 / 9000)		Ref. No.
NPS	DN	OD (mm)	B1 (mm)	B2 (mm)	
3/4" x 1/2"	20 x 15	26.7 x 21.3	27.2 ~ 27.6	21.8 ~ 22.2	N2501
1" x 3/4"	25 x 20	33.4 x 26.7	33.9 ~ 34.3	27.2 ~ 27.6	N2502
1" x 1/2"	25 x 15	33.4 x 21.3	33.9 ~ 34.3	21.8 ~ 22.2	N2503
1-1/4" x 1"	32 x 25	42.2 x 33.4	42.7 ~ 43.1	33.9 ~ 34.3	N2504
1-1/4" x 3/4"	32 x 20	42.2 x 26.7	42.7 ~ 43.1	27.2 ~ 27.6	N2505
1-1/4" x 1/2"	32 x 15	42.2 x 21.3	42.7 ~ 43.1	21.8 ~ 22.2	N2506
1-1/2" x 1-1/4"	40 x 32	48.3 x 42.2	48.8 ~ 49.2	42.7 ~ 43.1	N2507
1-1/2" x 1"	40 x 25	48.3 x 33.4	48.8 ~ 49.2	33.9 ~ 34.3	N2508
1-1/2" x 3/4"	40 x 20	48.3 x 26.7	48.8 ~ 49.2	27.2 ~ 27.6	N2509
1-1/2" x 1/2"	40 x 15	48.3 x 21.3	48.8 ~ 49.2	21.8 ~ 22.2	N2510
2" x 1-1/2"	50 x 40	60.3 x 48.3	61.2 ~ 61.7	48.8 ~ 49.2	N2511
2" x 1-1/4"	50 x 32	60.3 x 42.2	61.2 ~ 61.7	42.7 ~ 43.1	N2512
2" x 1"	50 x 25	60.3 x 33.4	61.2 ~ 61.7	33.9 ~ 34.3	N2513
2" x 3/4"	50 x 20	60.3 x 26.7	61.2 ~ 61.7	27.2 ~ 27.6	N2514
2" x 1/2"	50 x 15	60.3 x 21.3	61.2 ~ 61.7	21.8 ~ 22.2	N2515

# Socket weld eccentric reducer

## Available size

Size			Socket bore dia. (Class 3000 / 6000 / 9000)		Ref. No.
NPS	DN	OD (mm)	B1 (mm)	B2 (mm)	
2-1/2" x 2"	65 x 50	73.0 x 60.3	73.9 ~ 74.4	61.2 ~ 61.7	N2516
2-1/2" x 1-1/2"	65 x 40	73.0 x 48.3	73.9 ~ 74.4	48.8 ~ 49.2	N2517
2-1/2" x 1-1/4"	65 x 32	73.0 x 42.2	73.9 ~ 74.4	42.7 ~ 43.1	N2518
2-1/2" x 1"	65 x 25	73.0 x 33.4	73.9 ~ 74.4	33.9 ~ 34.3	N2519
2-1/2" x 3/4"	65 x 20	73.0 x 26.7	73.9 ~ 74.4	27.2 ~ 27.6	N2520
2-1/2" x 1/2"	65 x 15	73.0 x 21.3	73.9 ~ 74.4	21.8 ~ 22.2	N2521
3" x 2-1/2"	80 x 65	88.9 x 73.0	89.8 ~ 90.3	73.9 ~ 74.4	N2522
3" x 2"	80 x 50	88.9 x 60.3	89.8 ~ 90.3	61.2 ~ 61.7	N2523
3" x 1-1/2"	80 x 40	88.9 x 48.3	89.8 ~ 90.3	48.8 ~ 49.2	N2524
3" x 1-1/4"	80 x 32	88.9 x 42.2	89.8 ~ 90.3	42.7 ~ 43.1	N2525
3" x 1"	80 x 25	88.9 x 33.4	89.8 ~ 90.3	33.9 ~ 34.3	N2526
3" x 3/4"	80 x 20	88.9 x 26.7	89.8 ~ 90.3	27.2 ~ 27.6	N2527
3" x 1/2"	80 x 15	88.9 x 21.3	89.8 ~ 90.3	21.8 ~ 22.2	N2528
4" x 3"	100 x 80	114.3 x 88.9	115.2 ~ 115.7	89.8 ~ 90.3	N2529
4" x 2-1/2"	100 x 65	114.3 x 73.0	115.2 ~ 115.7	73.9 ~ 74.4	N2530
4" x 2"	100 x 50	114.3 x 60.3	115.2 ~ 115.7	61.2 ~ 61.7	N2531
4" x 1-1/2"	100 x 40	114.3 x 48.3	115.2 ~ 115.7	48.8 ~ 49.2	N2532
4" x 1-1/4"	100 x 32	114.3 x 42.2	115.2 ~ 115.7	42.7 ~ 43.1	N2533
4" x 1"	100 x 25	114.3 x 33.4	115.2 ~ 115.7	33.9 ~ 34.3	N2534
4" x 3/4"	100 x 20	114.3 x 26.7	115.2 ~ 115.7	27.2 ~ 27.6	N2535
4" x 1/2"	100 x 15	114.3 x 21.3	115.2 ~ 115.7	21.8 ~ 22.2	N2536