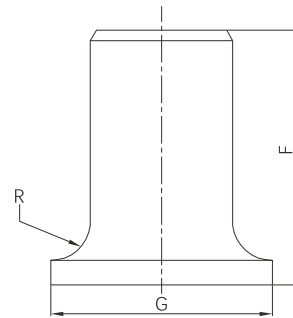


Lap joint stub end



- Certificate: ISO
- Standard: ASME B16.9
- Material: SS ASTM A403, WP304 / WP316L
- W. pressure: Equal to same seamless pipe
- Surface: Pickling white, etc.



Available size

Size		Length F (mm)		Radius of fillet R (mm)	Lap diameter G (mm)	Ref. No.	
NPS	DN	OD (mm)	Long pattern				Short pattern
1/2"	15	21.3	76	51	3	35	N1301
3/4"	20	26.7	76	51	3	43	N1302
1"	25	33.4	102	51	3	51	N1303
1-1/4"	32	42.2	102	51	5	64	N1304
1-1/2"	40	48.3	102	51	6	73	N1305
2"	50	60.3	152	64	8	92	N1306
2-1/2"	65	73.0	152	64	8	105	N1307
3"	80	88.9	152	64	10	127	N1308
4"	100	114.3	152	76	11	157	N1309
5"	125	141.3	203	76	11	186	N1310
6"	150	168.3	203	89	13	216	N1311
8"	200	219.1	203	102	13	270	N1312
10"	250	273.0	254	127	13	324	N1313
12"	300	323.8	254	152	13	381	N1314
14"	350	355.6	305	152	13	413	N1315
16"	400	406.4	305	152	13	470	N1316
18"	450	457	305	152	13	533	N1317
20"	500	508	305	152	13	584	N1318
24"	600	610	305	152	13	692	N1319