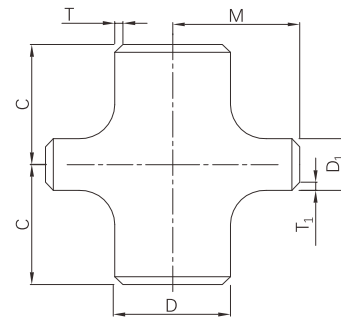


Butt weld reducing cross



- Certificate: ISO
- Standard: ASME B16.9
- Material: Carbon steel ASTM A234, WPB
SS ASTM A403, WP304 / WP316L
- W. pressure: Equal to same seamless pipe
- Surface: Black painting / hot dip galvanized
Pickling white, etc.



Available size

Size (D x D ₁)			Thickness T x T ₁ (mm)			C (mm)	M (mm)	Ref. No.
NPS	DN	OD (mm)	Sch10	Sch40	Sch80			
3/4" x 1/2"	20 x 15	26.7 x 21.3	2.11 x 2.11	2.87 x 2.77	3.91 x 3.73	29	29	N0901
1" x 3/4"	25 x 20	33.4 x 26.7	2.77 x 2.11	3.38 x 2.87	4.55 x 3.91	38	38	N0902
1" x 1/2"	25 x 15	33.4 x 21.3	2.77 x 2.11	3.38 x 2.77	4.55 x 3.73	38	38	N0903
1-1/4" x 1"	32 x 25	42.2 x 33.4	2.77 x 2.77	3.56 x 3.38	4.85 x 4.55	48	48	N0904
1-1/4" x 3/4"	32 x 20	42.2 x 26.7	2.77 x 2.11	3.56 x 2.87	4.85 x 3.91	48	48	N0905
1-1/4" x 1/2"	32 x 15	42.2 x 21.3	2.77 x 2.11	3.56 x 2.77	4.85 x 3.73	48	48	N0906
1-1/2" x 1-1/4"	40 x 32	48.3 x 42.2	2.77 x 2.77	3.68 x 3.56	5.08 x 4.85	57	57	N0907
1-1/2" x 1"	40 x 25	48.3 x 33.4	2.77 x 2.77	3.68 x 3.38	5.08 x 4.55	57	57	N0908
1-1/2" x 3/4"	40 x 20	48.3 x 26.7	2.77 x 2.11	3.68 x 2.87	5.08 x 3.91	57	57	N0909
1-1/2" x 1/2"	40 x 15	48.3 x 21.3	2.77 x 2.11	3.68 x 2.77	5.08 x 3.73	57	57	N0910
2" x 1-1/2"	50 x 40	60.3 x 48.3	2.77 x 2.77	3.91 x 3.68	5.54 x 5.08	64	60	N0911
2" x 1-1/4"	50 x 32	60.3 x 42.2	2.77 x 2.77	3.91 x 3.56	5.54 x 4.85	64	57	N0912
2" x 1"	50 x 25	60.3 x 33.4	2.77 x 2.77	3.91 x 3.38	5.54 x 4.55	64	51	N0913
2" x 3/4"	50 x 20	60.3 x 26.7	2.77 x 2.11	3.91 x 2.87	5.54 x 3.91	64	44	N0914
2" x 1/2"	50 x 15	60.3 x 21.3	2.77 x 2.11	3.91 x 2.77	5.54 x 3.73	64	38	N0915
2-1/2" x 2"	65 x 50	73.0 x 60.3	3.05 x 2.77	5.16 x 3.91	7.01 x 5.54	76	70	N0916

Butt weld reducing cross

Available size

Size (D x D _i)			Thickness T x T _i (mm)			C (mm)	M (mm)	Ref. No.
NPS	DN	OD (mm)	Sch10	Sch40	Sch80			
2-1/2" x 1-1/2"	65 x 40	73.0 x 48.3	3.05 x 2.77	5.16 x 3.68	7.01 x 5.08	76	67	N0917
2-1/2" x 1-1/4"	65 x 32	73.0 x 42.2	3.05 x 2.77	5.16 x 3.56	7.01 x 4.85	76	64	N0918
2-1/2" x 1"	65 x 25	73.0 x 33.4	3.05 x 2.77	5.16 x 3.38	7.01 x 4.55	76	57	N0919
2-1/2" x 3/4"	65 x 20	73.0 x 26.7	3.05 x 2.11	5.16 x 2.87	7.01 x 3.91	76	51	N0920
3" x 2-1/2"	80 x 65	88.9 x 73.0	3.05 x 3.05	5.49 x 5.16	7.62 x 7.01	86	83	N0921
3" x 2"	80 x 50	88.9 x 60.3	3.05 x 2.77	5.49 x 3.91	7.62 x 5.54	86	76	N0922
3" x 1-1/2"	80 x 40	88.9 x 48.3	3.05 x 2.77	5.49 x 3.68	7.62 x 5.08	86	73	N0923
3" x 1-1/4"	80 x 32	88.9 x 42.2	3.05 x 2.77	5.49 x 3.56	7.62 x 4.85	86	70	N0924
3" x 1"	80 x 25	88.9 x 33.4	3.05 x 2.77	5.49 x 3.38	7.62 x 4.55	86	57	N0925
4" x 3"	100 x 80	114.3 x 88.9	3.05 x 3.05	6.02 x 5.49	8.56 x 7.62	105	98	N0926
4" x 2-1/2"	100 x 65	114.3 x 73.0	3.05 x 3.05	6.02 x 5.16	8.56 x 7.01	105	95	N0927
4" x 2"	100 x 50	114.3 x 60.3	3.05 x 2.77	6.02 x 3.91	8.56 x 5.54	105	89	N0928
4" x 1-1/2"	100 x 40	114.3 x 48.3	3.05 x 2.77	6.02 x 3.68	8.56 x 5.08	105	86	N0929
4" x 1-1/4"	100 x 32	114.3 x 42.2	3.05 x 2.77	6.02 x 3.56	8.56 x 4.85	105	70	N0930
4" x 1"	100 x 25	114.3 x 33.4	3.05 x 2.77	6.02 x 3.38	8.56 x 4.55	105	57	N0931
5" x 4"	125 x 100	141.3 x 114.3	3.40 x 3.05	6.55 x 6.02	9.53 x 8.56	124	117	N0932
5" x 3"	125 x 80	141.3 x 88.9	3.40 x 3.05	6.55 x 5.49	9.53 x 7.62	124	111	N0933
5" x 2-1/2"	125 x 65	141.3 x 73.0	3.40 x 3.05	6.55 x 5.16	9.53 x 7.01	124	108	N0934
5" x 2"	125 x 50	141.3 x 60.3	3.40 x 2.77	6.55 x 3.91	9.53 x 5.54	124	105	N0935
5" x 1-1/2"	125 x 40	141.3 x 48.3	3.40 x 2.77	6.55 x 3.68	9.53 x 5.08	124	97	N0936
5" x 1-1/4"	125 x 32	141.3 x 42.2	3.40 x 2.77	6.55 x 3.56	9.53 x 4.85	124	70	N0937
5" x 1"	125 x 25	141.3 x 33.4	3.40 x 2.77	6.55 x 3.38	9.53 x 4.55	124	57	N0938
6" x 5"	150 x 125	168.3 x 141.3	3.40 x 3.40	7.11 x 6.55	10.97 x 9.53	143	137	N0939
6" x 4"	150 x 100	168.3 x 114.3	3.40 x 3.05	7.11 x 6.02	10.97 x 8.56	143	130	N0940
6" x 3"	150 x 80	168.3 x 88.9	3.40 x 3.05	7.11 x 5.49	10.97 x 7.62	143	124	N0941
6" x 2-1/2"	150 x 65	168.3 x 73.0	3.40 x 3.05	7.11 x 5.16	10.97 x 7.01	143	121	N0942
6" x 2"	150 x 50	168.3 x 60.3	3.40 x 2.77	7.11 x 3.91	10.97 x 5.54	143	105	N0943
6" x 1-1/2"	150 x 40	168.3 x 48.3	3.40 x 2.77	7.11 x 3.68	10.97 x 5.08	143	97	N0944
6" x 1-1/4"	150 x 32	168.3 x 42.2	3.40 x 2.77	7.11 x 3.56	10.97 x 4.85	143	70	N0945
6" x 1"	150 x 25	168.3 x 33.4	3.40 x 2.77	7.11 x 3.38	10.97 x 4.55	143	57	N0946
8" x 6"	200 x 150	219.1 x 168.3	3.76 x 3.40	8.18 x 7.11	12.70 x 10.97	178	168	N0947
8" x 5"	200 x 125	219.1 x 141.3	3.76 x 3.40	8.18 x 6.55	12.70 x 9.53	178	162	N0948
8" x 4"	200 x 100	219.1 x 114.3	3.76 x 3.05	8.18 x 6.02	12.70 x 8.56	178	156	N0949
8" x 3"	200 x 80	219.1 x 88.9	219.3 x 88.9	3.76 x 3.05	12.70 x 7.62	178	124	N0950
8" x 2-1/2"	200 x 65	219.1 x 73.0	219.1 x 73.0	3.76 x 3.05	12.70 x 7.01	178	121	N0951

Butt weld reducing cross

Available size

Size (D x D ₁)			Thickness T x T ₁ (mm)			C (mm)	M (mm)	Ref. No.
NPS	DN	OD (mm)	Sch10	Sch40	Sch80			
10" x 8"	250 x 200	273.0 x 219.1	4.19 x 3.76	9.27 x 8.18	15.09 x 12.70	216	203	N0952
10" x 6"	250 x 150	273.0 x 168.3	4.19 x 3.40	9.27 x 7.11	15.09 x 10.97	216	194	N0953
10" x 5"	250 x 125	273.0 x 141.3	4.19 x 3.40	9.27 x 6.55	15.09 x 9.53	216	191	N0954
10" x 4"	250 x 100	273.0 x 114.3	4.19 x 3.05	9.27 x 6.02	15.09 x 8.56	216	184	N0955
12" x 10"	300 x 250	323.8 x 273.0	4.57 x 4.19	10.31 x 9.27	17.48 x 15.09	254	241	N0956
12" x 8"	300 x 200	323.8 x 219.1	4.57 x 3.76	10.31 x 8.18	17.48 x 12.70	254	229	N0957
12" x 6"	300 x 150	323.8 x 168.3	4.57 x 3.40	10.31 x 7.11	17.48 x 10.97	254	219	N0958
12" x 5"	300 x 125	323.8 x 141.3	4.57 x 3.40	10.31 x 6.55	17.48 x 9.53a	254	216	N0959
14" x 12"	350 x 300	355.6 x 323.8	6.35 x 4.57	11.13 x 10.31	19.05 x 17.48	279	270	N0960
14" x 10"	350 x 250	355.6 x 273.0	6.35 x 4.19	11.13 x 9.27	19.05 x 15.09	279	257	N0961
14" x 8"	350 x 200	355.6 x 219.1	6.35 x 3.76	11.13 x 8.18	19.05 x 12.70	279	248	N0962
14" x 6"	350 x 150	355.6 x 168.3	6.35 x 3.40	11.13 x 7.11	19.05 x 10.97	279	238	N0963
16" x 14"	400 x 350	406.4 x 355.6	6.35 x 6.35	12.70 x 11.13	21.44 x 19.05	305	305	N0964
16" x 12"	400 x 300	406.4 x 323.8	6.35 x 4.57	12.70 x 10.31	21.44 x 17.48	305	295	N0965
16" x 10"	400 x 250	406.4 x 273.0	6.35 x 4.19	12.70 x 9.27	21.44 x 15.09	305	283	N0966
16" x 8"	400 x 200	406.4 x 219.1	6.35 x 3.76	12.70 x 8.18	21.44 x 12.70	305	273	N0967
16" x 6"	400 x 150	406.4 x 168.3	6.35 x 3.40	12.70 x 7.11	21.44 x 10.97	305	264	N0968
18" x 16"	450 x 400	457 x 406.4	6.35 x 6.35	14.27 x 12.70	23.83 x 21.44	343	330	N0969
18" x 14"	450 x 350	457 x 355.6	6.35 x 6.35	14.27 x 11.13	23.83 x 19.05	343	330	N0970
18" x 12"	450 x 300	457 x 323.8	6.35 x 4.57	14.27 x 10.31	23.83 x 17.48	343	321	N0971
18" x 10"	450 x 250	457 x 273.0	6.35 x 4.19	14.27 x 9.27	23.83 x 15.09	343	308	N0972
18" x 8"	450 x 200	457 x 219.1	6.35 x 3.76	14.27 x 8.18	23.83 x 12.70	343	298	N0973
20" x 18"	500 x 450	508 x 457	6.35 x 6.35	15.09 x 14.27	26.19 x 23.83	381	368	N0974
20" x 16"	500 x 400	508 x 406.4	6.35 x 6.35	15.09 x 12.70	26.19 x 21.44	381	356	N0975
20" x 14"	500 x 350	508 x 355.6	6.35 x 6.35	15.09 x 11.13	26.19 x 19.05	381	356	N0976
20" x 12"	500 x 300	508 x 323.8	6.35 x 4.57	15.09 x 10.31	26.19 x 17.48	381	346	N0977
20" x 10"	500 x 250	508 x 273.0	6.35 x 4.19	15.09 x 9.27	26.19 x 15.09	381	333	N0978
20" x 8"	500 x 200	508 x 219.1	6.35 x 3.76	15.09 x 8.18	26.19 x 12.70	381	324	N0979
24" x 20"	600 x 500	610 x 508	6.35 x 6.35	17.48 x 15.09	30.96 x 26.19	432	432	N0980
24" x 18"	600 x 450	610 x 457	6.35 x 6.35	17.48 x 14.27	30.96 x 23.83	432	419	N0981
24" x 16"	600 x 400	610 x 406.4	6.35 x 6.35	17.48 x 12.70	30.96 x 21.44	432	406	N0982
24" x 14"	600 x 350	610 x 355.6	6.35 x 6.35	17.48 x 11.13	30.96 x 19.05	432	406	N0983
24" x 12"	600 x 300	610 x 323.8	6.35 x 4.57	17.48 x 10.31	30.96 x 17.48	432	397	N0984
24" x 10"	600 x 250	610 x 273.0	6.35 x 4.19	17.48 x 9.27	30.96 x 15.09	432	384	N0985

Note: The thickness is available with Sch5, Sch10, Sch30, Sch40, Sch80, Sch120, Sch160, STD, XS, XXS, 5S, 10S, 40S, 80S, etc.