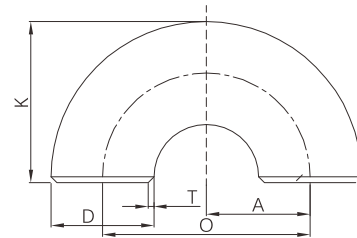


## Butt weld 180° return (Short radius)



- Certificate: ISO
- Standard: ASME B16.9
- Material: Carbon steel ASTM A234, WPB  
SS ASTM A403, WP304 / WP316L
- Type: Short radius, R=1.0D
- W. pressure: Equal to same seamless pipe
- Surface: Black painting / hot dip galvanized  
Pickling white, etc.



### Available size

Size			Thickness (mm)			O (mm)	K (mm)	Ref. No.
NPS	DN	OD (mm)	Sch10	Sch40	Sch80			
1"	25	33.4	2.77	3.38	4.55	51	41	N0503
1-1/4"	32	42.2	2.77	3.56	4.85	64	52	N0504
1-1/2"	40	48.3	2.77	3.68	5.08	76	62	N0505
2"	50	60.3	2.77	3.91	5.54	102	81	N0506
2-1/2"	65	73.0	3.05	5.16	7.01	127	100	N0507
3"	80	88.9	3.05	5.49	7.62	152	121	N0508
4"	100	114.3	3.05	6.02	8.56	203	159	N0509
5"	125	141.3	3.40	6.55	9.53	254	197	N0510
6"	150	168.3	3.40	7.11	10.97	305	237	N0511
8"	200	219.1	3.76	8.18	12.70	406	313	N0512
10"	250	273.0	4.19	9.27	15.09	508	391	N0513
12"	300	323.8	4.57	10.31	17.48	610	467	N0514
14"	350	355.6	6.35	11.13	19.05	711	533	N0515
16"	400	406.4	6.35	12.70	21.44	813	610	N0516
18"	450	457	6.35	14.27	23.83	914	686	N0517
20"	500	508	6.35	15.09	26.19	1016	762	N0518
24"	600	610	6.35	17.48	30.96	1219	914	N0519

**Note:** The thickness is available with Sch5, Sch10, Sch30, Sch40, Sch80, Sch120, Sch160, STD, XS, XXS, 5S, 10S, 40S, 80S, etc.