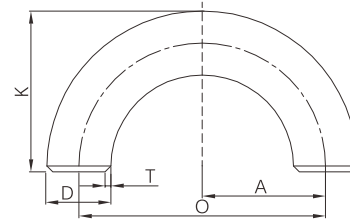


Butt weld 180° return (Long radius)



- Certificate: ISO
- Standard: ASME B16.9
- Material: Carbon steel ASTM A234, WPB
SS ASTM A403, WP304 / WP316L
- Type: Long radius, R=1.5D
- W. pressure: Equal to same seamless pipe
- Surface: Black painting / hot dip galvanized
Pickling white, etc.



Available size

Size			Thickness (mm)			O (mm)	K (mm)	Ref. No.
NPS	DN	OD (mm)	Sch10	Sch40	Sch80			
1/2"	15	21.3	2.11	2.77	3.73	76	48	N0401
3/4"	20	26.7	2.11	2.87	3.91	76	51	N0402
1"	25	33.4	2.77	3.38	4.55	76	56	N0403
1-1/4"	32	42.2	2.77	3.56	4.85	95	70	N0404
1-1/2"	40	48.3	2.77	3.68	5.08	114	83	N0405
2"	50	60.3	2.77	3.91	5.54	152	106	N0406
2-1/2"	65	73.0	3.05	5.16	7.01	190	132	N0407
3"	80	88.9	3.05	5.49	7.62	229	159	N0408
4"	100	114.3	3.05	6.02	8.56	305	210	N0409
5"	125	141.3	3.40	6.55	9.53	381	262	N0410
6"	150	168.3	3.40	7.11	10.97	457	313	N0411
8"	200	219.1	3.76	8.18	12.70	610	414	N0412
10"	250	273.0	4.19	9.27	15.09	762	518	N0413
12"	300	323.8	4.57	10.31	17.48	914	619	N0414
14"	350	355.6	6.35	11.13	19.05	1067	711	N0415
16"	400	406.4	6.35	12.70	21.44	1219	813	N0416
18"	450	457	6.35	14.27	23.83	1372	914	N0417
20"	500	508	6.35	15.09	26.19	1524	1016	N0418
24"	600	610	6.35	17.48	30.96	1829	1219	N0419

Note: The thickness is available with Sch5, Sch10, Sch30, Sch40, Sch80, Sch120, Sch160, STD, XS, XXS, 5S, 10S, 40S, 80S, etc.