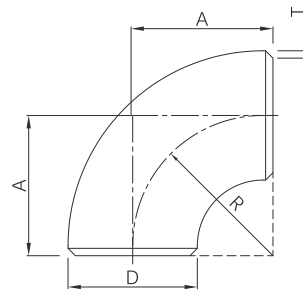


Butt weld 90° elbow (Short radius)



- Certificate: ISO
- Standard: ASME B16.9
- Material: Carbon steel ASTM A234, WPB
SS ASTM A403, WP304 / WP316L
- Type: Short radius, R=1.0D
- W. pressure: Equal to same seamless pipe
- Surface: Black painting / hot dip galvanized
Pickling white, etc.



Available size

Size			Thickness (mm)			A (mm)	Ref. No.
NPS	DN	OD (mm)	Sch10	Sch40	Sch80		
1"	25	33.4	2.77	3.38	4.55	25	N0203
1-1/4"	32	42.2	2.77	3.56	4.85	32	N0204
1-1/2"	40	48.3	2.77	3.68	5.08	38	N0205
2"	50	60.3	2.77	3.91	5.54	51	N0206
2-1/2"	65	73.0	3.05	5.16	7.01	64	N0207
3"	80	88.9	3.05	5.49	7.62	76	N0208
4"	100	114.3	3.05	6.02	8.56	102	N0209
5"	125	141.3	3.40	6.55	9.53	127	N0210
6"	150	168.3	3.40	7.11	10.97	152	N0211
8"	200	219.1	3.76	8.18	12.70	203	N0212
10"	250	273.0	4.19	9.27	15.09	254	N0213
12"	300	323.8	4.57	10.31	17.48	305	N0214
14"	350	355.6	6.35	11.13	19.05	356	N0215
16"	400	406.4	6.35	12.70	21.44	406	N0216
18"	450	457	6.35	14.27	23.83	457	N0217
20"	500	508	6.35	15.09	26.19	508	N0218
24"	600	610	6.35	17.48	30.96	610	N0219

Note: The thickness is available with Sch5, Sch10, Sch30, Sch40, Sch80, Sch120, Sch160, STD, XS, XXS, 5S, 10S, 40S, 80S, etc.