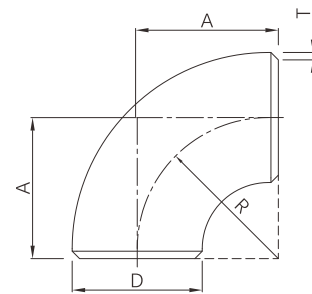


Butt weld 90° elbow (Long radius)



- Certificate: ISO
- Standard: ASME B16.9
- Material: Carbon steel ASTM A234, WPB
SS ASTM A403, WP304 / WP316L
- Type: Long radius, R=1.5D
- W. pressure: Equal to same seamless pipe
- Surface: Black painting / hot dip galvanized
Pickling white, etc.



Available size

Size			Thickness (mm)			A (mm)	Ref. No.
NPS	DN	OD (mm)	Sch10	Sch40	Sch80		
1/2"	15	21.3	2.11	2.77	3.73	38	N0101
3/4"	20	26.7	2.11	2.87	3.91	38	N0102
1"	25	33.4	2.77	3.38	4.55	38	N0103
1-1/4"	32	42.2	2.77	3.56	4.85	48	N0104
1-1/2"	40	48.3	2.77	3.68	5.08	57	N0105
2"	50	60.3	2.77	3.91	5.54	76	N0106
2-1/2"	65	73.0	3.05	5.16	7.01	95	N0107
3"	80	88.9	3.05	5.49	7.62	114	N0108
4"	100	114.3	3.05	6.02	8.56	152	N0109
5"	125	141.3	3.40	6.55	9.53	190	N0110
6"	150	168.3	3.40	7.11	10.97	229	N0111
8"	200	219.1	3.76	8.18	12.70	305	N0112
10"	250	273.0	4.19	9.27	15.09	381	N0113
12"	300	323.8	4.57	10.31	17.48	457	N0114
14"	350	355.6	6.35	11.13	19.05	533	N0115
16"	400	406.4	6.35	12.70	21.44	610	N0116
18"	450	457	6.35	14.27	23.83	686	N0117
20"	500	508	6.35	15.09	26.19	762	N0118
24"	600	610	6.35	17.48	30.96	914	N0119

Note: The thickness is available with Sch5, Sch10, Sch30, Sch40, Sch80, Sch120, Sch160, STD, XS, XXS, 5S, 10S, 40S, 80S, etc.